

## Phospho-BCL2-S70 pAb

<b>Catalog No.</b>	AP0315	<b>Category</b>	Phosphorylated Antibodies
<b>Applications</b>	IHC	<b>Observed MW</b>	
<b>Cross-reactivity</b>	Human	<b>Calculated MW</b>	22kDa/26kDa

### Immunogen Information

<b>Immunogen</b>	A phospho specific peptide corresponding to residues surrounding S70 of human BCL2
<b>Gene ID</b>	596
<b>Swiss prot</b>	P10415
<b>Synonyms</b>	BCL2; Bcl-2; PPP1R50; apoptosis regulator Bcl-2

### Product information

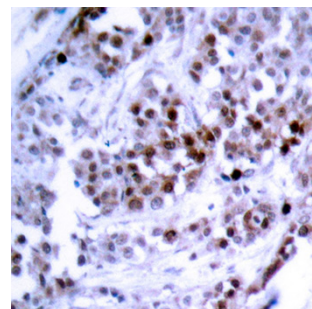
<b>Source</b>	Rabbit
<b>Isotype</b>	IgG
<b>Purification method</b>	Affinity purification
<b>Storage</b>	Store at -20°C. Avoid freeze / thaw cycles. Buffer: PBS with 0.02% sodium azide, 50% glycerol, pH7.3.

### Background

This gene encodes an integral outer mitochondrial membrane protein that blocks the apoptotic death of some cells such as lymphocytes. Constitutive expression of BCL2, such as in the case of translocation of BCL2 to Ig heavy chain locus, is thought to be the cause of follicular lymphoma. Alternative splicing results in multiple transcript variants.

### Recommended Dilutions

IHC 1:50 -  
1:100



Immunohistochemistry - Phospho-BCL2-S70 pAb (AP0315)