

## SEC22B Polyclonal Antibody

<b>Catalog No.</b>	A15358	<b>Category</b>	Polyclonal Antibodies
<b>Applications</b>	WB	<b>Observed MW</b>	25kDa
<b>Cross-reactivity</b>	Human, Mouse	<b>Calculated MW</b>	24kDa

### Immunogen Information

<b>Immunogen</b>	Recombinant fusion protein containing a sequence corresponding to amino acids 85-195 of human SEC22B (NP_004883.3).
<b>Gene ID</b>	9554
<b>Swiss prot</b>	O75396
<b>Synonyms</b>	SEC22B; ERS-24; SEC22L1; vesicle-trafficking protein SEC22b

### Product information

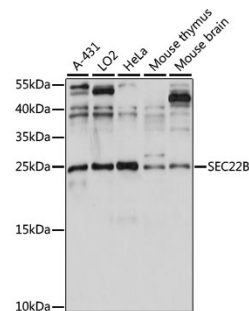
<b>Source</b>	Rabbit
<b>Isotype</b>	IgG
<b>Purification method</b>	Affinity purification
<b>Storage</b>	Store at -20°C. Avoid freeze / thaw cycles. Buffer: PBS with 0.02% sodium azide, 50% glycerol, pH7.3.

### Background

The protein encoded by this gene is a member of the SEC22 family of vesicle trafficking proteins. It seems to complex with SNARE and it is thought to play a role in the ER-Golgi protein trafficking. This protein has strong similarity to Mus musculus and Cricetulus griseus proteins.

### Recommended Dilutions

WB 1:200 -  
1:2000



Western blot - SEC22B Polyclonal Antibody (A15358)