

## [KO Validated] MAP2K2 Polyclonal Antibody

<b>Catalog No.</b>	A14770	<b>Category</b>	Polyclonal Antibodies
<b>Applications</b>	WB	<b>Observed MW</b>	50kDa
<b>Cross-reactivity</b>	Human, Mouse, Rat	<b>Calculated MW</b>	44kDa

### Immunogen Information

<b>Immunogen</b>	A synthetic peptide corresponding to a sequence within amino acids 1-100 of human MAP2K2 (NP_109587.1).
<b>Gene ID</b>	5605
<b>Swiss prot</b>	P36507
<b>Synonyms</b>	MAP2K2; CFC4; MAPKK2; MEK2; MKK2; PRKMK2; mitogen-activated protein kinase kinase 2

### Product information

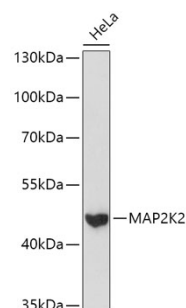
<b>Source</b>	Rabbit
<b>Isotype</b>	IgG
<b>Purification method</b>	Affinity purification
<b>Storage</b>	Store at -20°C. Avoid freeze / thaw cycles. Buffer: PBS with 0.02% sodium azide, 50% glycerol, pH7.3.

### Background

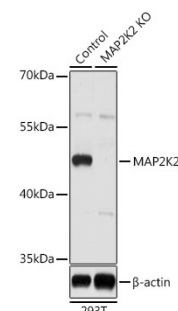
The protein encoded by this gene is a dual specificity protein kinase that belongs to the MAP kinase kinase family. This kinase is known to play a critical role in mitogen growth factor signal transduction. It phosphorylates and thus activates MAPK1/ERK2 and MAPK2/ERK3. The activation of this kinase itself is dependent on the Ser/Thr phosphorylation by MAP kinase kinase kinases. Mutations in this gene cause cardiofaciocutaneous syndrome (CFC syndrome), a disease characterized by heart defects, mental retardation, and distinctive facial features similar to those found in Noonan syndrome. The inhibition or degradation of this kinase is also found to be involved in the pathogenesis of Yersinia and anthrax. A pseudogene, which is located on chromosome 7, has been identified for this gene.

### Recommended Dilutions

WB 1:500 -  
1:2000



Western blot - [KO Validated] MAP2K2 Polyclonal Antibody (A14770)



Western blot - [KO Validated] MAP2K2 Polyclonal Antibody (A14770)