

PRAME Polyclonal Antibody

Catalog No.	A6456	Category	Polyclonal Antibodies
Applications	WB, IF	Observed MW	Refer to Figures
Cross-reactivity	Human	Calculated MW	57kDa

Immunogen Information

Immunogen	Recombinant fusion protein containing a sequence corresponding to amino acids 1-300 of human PRAME (NP_996839.1).
Gene ID	23532
Swiss prot	P78395
Synonyms	PRAME; CT130; MAPE; OIP-4; OIP4; preferentially expressed antigen in melanoma

Product information

Source	Rabbit
Isotype	IgG
Purification method	Affinity purification
Storage	Store at -20°C. Avoid freeze / thaw cycles. Buffer: PBS with 0.02% sodium azide, 50% glycerol, pH7.3.

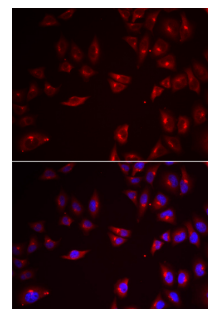
Background

This gene encodes an antigen that is preferentially expressed in human melanomas and that is recognized by cytolytic T lymphocytes. It is not expressed in normal tissues, except testis. The encoded protein acts as a repressor of retinoic acid receptor, and likely confers a growth advantage to cancer cells via this function. Alternative splicing results in multiple transcript variants.

Recommended Dilutions

WB 1:500 -
1:2000

IF 1:20 - 1:50



Immunofluorescence - PRAME Polyclonal Antibody (A6456)