

RAF1 Polyclonal Antibody

Catalog No.	A0223	Category	Polyclonal Antibodies
Applications	WB, IHC, IF	Observed MW	73kDa
Cross-reactivity	Human, Mouse, Rat	Calculated MW	73kDa/75kDa

Immunogen Information

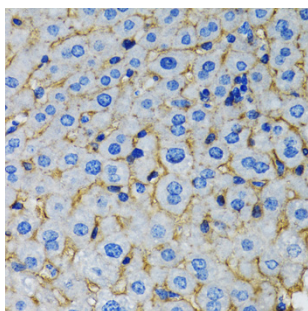
Immunogen	Recombinant fusion protein containing a sequence corresponding to amino acids 190-350 of human RAF1 (NP_002871.1).
Gene ID	5894
Swiss prot	P04049
Synonyms	RAF1; CMD1NN; CRAF; NS5; Raf-1; c-Raf; Raf-1 p roto-oncogene, serine/threonine kinase

Product information

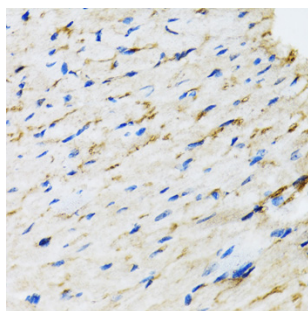
Source	Rabbit
Isotype	IgG
Purification method	Affinity purification
Storage	Store at -20°C. Avoid freeze / thaw cycles. Buffer: PBS with 0.02% sodium azide, 50% glycerol, pH7.3.

Background

This gene is the cellular homolog of viral raf gene (v-raf). The encoded protein is a MAP kinase kinase kinase (MAP3K), which functions downstream of the Ras family of membrane associated GTPases to which it binds directly. Once activated, the cellular RAF1 protein can phosphorylate to activate the dual specificity protein kinases MEK1 and MEK2, which in turn phosphorylate to activate the serine/threonine specific protein kinases, ERK1 and ERK2. Activated ERKs are pleiotropic effectors of cell physiology and play an important role in the control of gene expression involved in the cell division cycle, apoptosis, cell differentiation and cell migration. Mutations in this gene are associated with Noonan syndrome 5 and LEOPARD syndrome 2.



Immunohistochemistry - RAF1
Polyclonal Antibody (A0223)



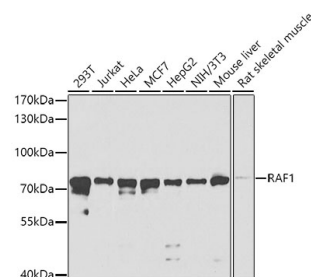
Immunohistochemistry - RAF1
Polyclonal Antibody (A0223)

Recommended Dilutions

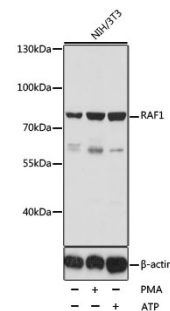
WB 1:500 -
1:2000

IHC 1:50 -
1:200

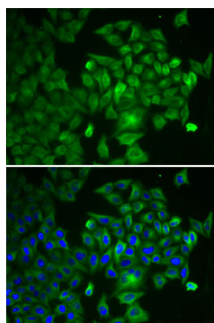
IF 1:50 -
1:200



Western blot - RAF1 Polyclonal
Antibody (A0223)



Western blot - RAF1 Polyclonal
Antibody (A0223)



Immunofluorescence - RAF1 Polyclonal
Antibody (A0223)