

## SMAD3 Polyclonal Antibody

<b>Catalog No.</b>	A11388	<b>Category</b>	Polyclonal Antibodies
<b>Applications</b>	WB, IHC, IF	<b>Observed MW</b>	48kDa
<b>Cross-reactivity</b>	Human, Mouse, Rat	<b>Calculated MW</b>	25kDa/35kDa/43kDa/48kDa

### Immunogen Information

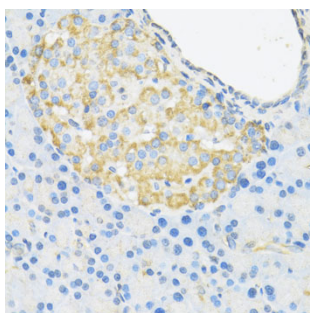
<b>Immunogen</b>	Recombinant fusion protein containing a sequence corresponding to amino acids 1-230 of human SMAD3 (NP_005893.1).
<b>Gene ID</b>	4088
<b>Swiss prot</b>	P84022
<b>Synonyms</b>	SMAD3; HSPC193; HsT17436; JV15-2; LDS1C; LDS3; MADH3; SMAD family member 3

### Product information

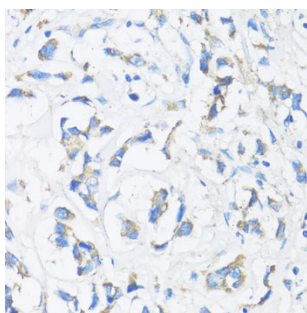
<b>Source</b>	Rabbit
<b>Isotype</b>	IgG
<b>Purification method</b>	Affinity purification
<b>Storage</b>	Store at -20°C. Avoid freeze / thaw cycles. Buffer: PBS with 0.02% sodium azide, 50% glycerol, pH7.3.

### Background

The protein encoded by this gene belongs to the SMAD, a family of proteins similar to the gene products of the Drosophila gene 'mothers against decapentaplegic' (Mad) and the C. elegans gene Sma. SMAD proteins are signal transducers and transcriptional modulators that mediate multiple signaling pathways. This protein functions as a transcriptional modulator activated by transforming growth factor-beta and is thought to play a role in the regulation of carcinogenesis.



Immunohistochemistry - SMAD3 Polyclonal Antibody (A11388)



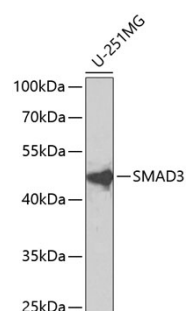
Immunohistochemistry - SMAD3 Polyclonal Antibody (A11388)

### Recommended Dilutions

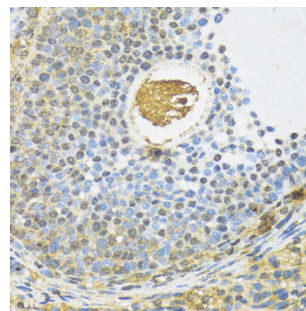
WB 1:500 -  
1:2000

IHC 1:50 -  
1:200

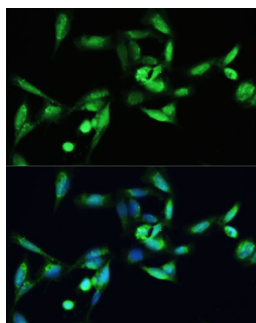
IF 1:50 -  
1:200



Western blot - SMAD3 Polyclonal Antibody (A11388)



Immunohistochemistry - SMAD3 Polyclonal Antibody (A11388)



Immunofluorescence - SMAD3 Polyclonal Antibody (A11388)