

CXXC1 Polyclonal Antibody

Catalog No.	A13423	Category	Polyclonal Antibodies
Applications	WB, IF, IP	Observed MW	Refer to Figures
Cross-reactivity	Human, Mouse	Calculated MW	75kDa/76kDa

Immunogen Information

Immunogen	Recombinant fusion protein containing a sequence corresponding to amino acids 1-210 of human CXXC1 (NP_001095124.1).
Gene ID	30827
Swiss prot	Q9P0U4
Synonyms	CXXC1; 2410002I16Rik; 5830420C16Rik; CFP1; CGB P; HsT2645; PCCX1; PHF18; SPP1; ZCGPC1; hCGBP; CXXC finger protein 1

Product information

Source	Rabbit
Isotype	IgG
Purification method	Affinity purification
Storage	Store at -20°C. Avoid freeze / thaw cycles. Buffer: PBS with 0.02% sodium azide, 50% glycerol, pH7.3.

Background

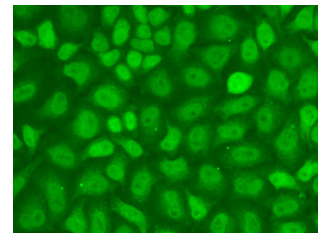
This gene encodes a protein that functions as a transcriptional activator that binds specifically to non-methylated CpG motifs through its CXXC domain. The protein is a component of the SETD1 complex, regulates gene expression and is essential for vertebrate development.

Recommended Dilutions

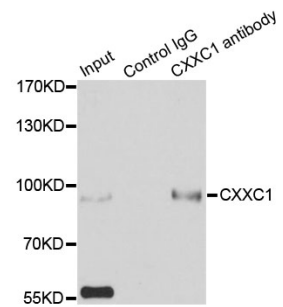
WB 1:500 -
1:2000

IF 1:50 -
1:200

IP 1:20 - 1:50



Immunofluorescence - CXXC1 Polyclonal Antibody (A13423)



Immunoprecipitation - CXXC1 Polyclonal Antibody (A13423)