

SUCLG2 Polyclonal Antibody

Catalog No.	A8976	Category	Polyclonal Antibodies
Applications	WB	Observed MW	47kDa
Cross-reactivity	Human, Mouse, Rat	Calculated MW	46kDa/47kDa

Immunogen Information

Immunogen	Recombinant fusion protein containing a sequence corresponding to amino acids 50-300 of human SUCLG2 (NP_003839.2).
Gene ID	8801
Swiss prot	Q96I99
Synonyms	SUCLG2; G-SCS; GBETA; GTPSCS; succinate-CoA li gase GDP-forming beta subunit

Product information

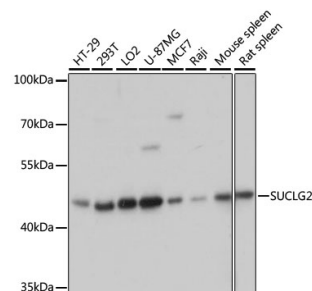
Source	Rabbit
Isotype	IgG
Purification method	Affinity purification
Storage	Store at -20°C. Avoid freeze / thaw cycles. Buffer: PBS with 0.02% sodium azide, 50% glycerol, pH7.3.

Background

This gene encodes a GTP-specific beta subunit of succinyl-CoA synthetase. Succinyl-CoA synthetase catalyzes the reversible reaction involving the formation of succinyl-CoA and succinate. Alternate splicing results in multiple transcript variants. Pseudogenes of this gene are found on chromosomes 5 and 12.

Recommended Dilutions

WB 1:500 -
1:2000



Western blot - SUCLG2 Polyclonal Antibody (A8976)