

## AXL Polyclonal Antibody

<b>Catalog No.</b>	A0532	<b>Category</b>	Polyclonal Antibodies
<b>Applications</b>	WB, IHC, FC	<b>Observed MW</b>	100kDa
<b>Cross-reactivity</b>	Human	<b>Calculated MW</b>	97kDa/98kDa

### Immunogen Information

<b>Immunogen</b>	A synthetic peptide of human AXL
<b>Gene ID</b>	558
<b>Swiss prot</b>	P30530
<b>Synonyms</b>	AXL; ARK; JTK11; Tyro7; UFO; AXL receptor tyrosine kinase

### Product information

<b>Source</b>	Rabbit
<b>Isotype</b>	IgG
<b>Purification method</b>	Affinity purification
<b>Storage</b>	Store at 4°C. Avoid freeze / thaw cycles. Buffer: PBS with 0.02% sodium azide, pH7.3.

### Background

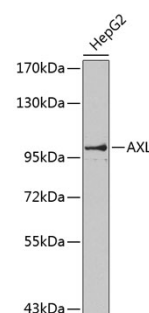
The protein encoded by this gene is a member of the Tyro3-Axl-Mer (TAM) receptor tyrosine kinase subfamily. The encoded protein possesses an extracellular domain which is composed of two immunoglobulin-like motifs at the N-terminal, followed by two fibronectin type-III motifs. It transduces signals from the extracellular matrix into the cytoplasm by binding to the vitamin K-dependent protein growth arrest-specific 6 (Gas6). This gene may be involved in several cellular functions including growth, migration, aggregation and anti-inflammation in multiple cell types. Alternative splicing results in multiple transcript variants of this gene.

### Recommended Dilutions

WB 1:500 -  
1:1000

IHC 1:50 -  
1:100

FC 1:20 - 1:50



Western blot - AXL Polyclonal Antibody (A0532)