

## LSM1 Polyclonal Antibody

<b>Catalog No.</b>	A5976	<b>Category</b>	Polyclonal Antibodies
<b>Applications</b>	WB, IHC	<b>Observed MW</b>	20kDa
<b>Cross-reactivity</b>	Human	<b>Calculated MW</b>	15kDa

### Immunogen Information

<b>Immunogen</b>	A synthetic peptide of human LSM1
<b>Gene ID</b>	27257
<b>Swiss prot</b>	O15116
<b>Synonyms</b>	LSM1; CASM; YJL124C; U6 snRNA-associated Sm-like protein LSM1

### Product information

<b>Source</b>	Rabbit
<b>Isotype</b>	IgG
<b>Purification method</b>	Affinity purification
<b>Storage</b>	Store at 4°C. Avoid freeze / thaw cycles. Buffer: PBS with 0.02% sodium azide, pH7.3.

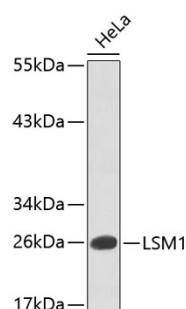
### Background

This gene encodes a member of the LSm family of RNA-binding proteins. LSm proteins form stable heteromers that bind specifically to the 3'-terminal oligo(U) tract of U6 snRNA and may play a role in pre-mRNA splicing by mediating U4/U6 snRNP formation. Increased expression of this gene may play a role in cellular transformation and the progression of several malignancies including lung cancer, mesothelioma and breast cancer. Alternatively spliced transcript variants have been observed for this gene, and a pseudogene of this gene is located on the short arm of chromosome 9.

### Recommended Dilutions

WB 1:200 -  
1:2000

IHC 1:50 -  
1:200



Western blot - LSM1 Polyclonal Antibody (A5976)