

## TWF1 Polyclonal Antibody

<b>Catalog No.</b>	A15307	<b>Category</b>	Polyclonal Antibodies
<b>Applications</b>	WB	<b>Observed MW</b>	40kDa
<b>Cross-reactivity</b>	Human, Mouse	<b>Calculated MW</b>	28kDa/40kDa/41kDa

### Immunogen Information

<b>Immunogen</b>	Recombinant fusion protein containing a sequence corresponding to amino acids 101-350 of human TWF1 (NP_002813.3).
<b>Gene ID</b>	5756
<b>Swiss prot</b>	Q12792
<b>Synonyms</b>	TWF1; A6; PTK9; twinfilin-1

### Product information

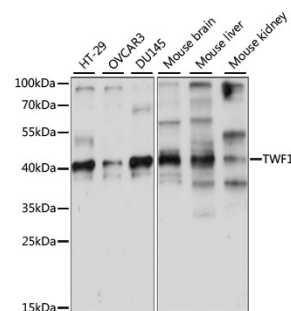
<b>Source</b>	Rabbit
<b>Isotype</b>	IgG
<b>Purification method</b>	Affinity purification
<b>Storage</b>	Store at -20°C. Avoid freeze / thaw cycles. Buffer: PBS with 0.02% sodium azide, 50% glycerol, pH7.3.

### Background

This gene encodes twinfilin, an actin monomer-binding protein conserved from yeast to mammals. Studies of the mouse counterpart suggest that this protein may be an actin monomer-binding protein, and its localization to cortical G-actin-rich structures may be regulated by the small GTPase RAC1.

### Recommended Dilutions

WB 1:200 -  
1:2000



Western blot - TWF1 Polyclonal Antibody (A15307)