

KIR3DL2 Polyclonal Antibody

Catalog No.	A10117	Category	Polyclonal Antibodies
Applications	WB	Observed MW	50kDa
Cross-reactivity	Human, Mouse, Rat	Calculated MW	48kDa/50kDa

Immunogen Information

Immunogen	Recombinant fusion protein containing a sequence corresponding to amino acids 361-455 of human KIR3DL2 (NP_006728.2).
Gene ID	3812
Swiss prot	P43630
Synonyms	KIR3DL2; 3DL2; CD158K; KIR-3DL2; NKAT-4; NKAT4 ; NKAT4B; p140; killer cell immunoglobulin-like receptor 3DL2

Product information

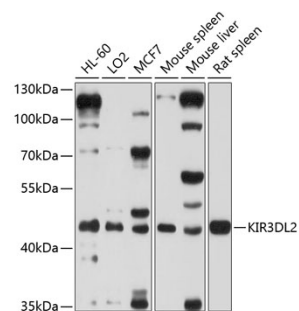
Source	Rabbit
Isotype	IgG
Purification method	Affinity purification
Storage	Store at -20°C. Avoid freeze / thaw cycles. Buffer: PBS with 0.02% sodium azide, 50% glycerol, pH7.3.

Background

Killer cell immunoglobulin-like receptors (KIRs) are transmembrane glycoproteins expressed by natural killer cells and subsets of T cells. The KIR genes are polymorphic and highly homologous and they are found in a cluster on chromosome 19q13.4 within the 1 Mb leukocyte receptor complex (LRC). The gene content of the KIR gene cluster varies among haplotypes, although several 'framework' genes are found in all haplotypes (KIR3DL3, KIR3DP1, KIR3DL4, KIR3DL2). The KIR proteins are classified by the number of extracellular immunoglobulin domains (2D or 3D) and by whether they have a long (L) or short (S) cytoplasmic domain. KIR proteins with the long cytoplasmic domain transduce inhibitory signals upon ligand binding via an immune tyrosine-based inhibitory motif (ITIM), while KIR proteins with the short cytoplasmic domain lack the ITIM motif and instead associate with the TYRO protein tyrosine kinase binding protein to transduce activating signals. The ligands for several KIR proteins are subsets of HLA class I molecules; thus, KIR proteins are thought to play an important role in regulation of the immune response. This gene is one of the 'framework' loci that is present on all haplotypes. Alternatively spliced transcript variants encoding multiple isoforms have been observed for this gene.

Recommended Dilutions

WB 1:500 -
1:2000



Western blot - KIR3DL2 Polyclonal Antibody (A10117)