

ZFYVE16 Polyclonal Antibody

Catalog No.	A13154	Category	Polyclonal Antibodies
Applications	WB	Observed MW	160kDa
Cross-reactivity	Human	Calculated MW	166kDa

Immunogen Information

Immunogen	Recombinant fusion protein containing a sequence corresponding to amino acids 1-300 of mouse ZFYVE16 (NP_775568.1).
Gene ID	218441
Swiss prot	
Synonyms	ZFYVE16; PPP1R69; zinc finger FYVE-type containing 16

Product information

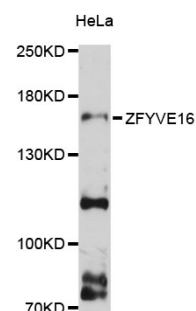
Source	Rabbit
Isotype	IgG
Purification method	Affinity purification
Storage	Store at -20°C. Avoid freeze / thaw cycles. Buffer: PBS with 0.02% sodium azide, 50% glycerol, pH7.3.

Background

This gene encodes an endosomal protein that belongs to the FYVE zinc finger family of proteins. The encoded protein is thought to regulate membrane trafficking in the endosome. This protein functions as a scaffold protein in the transforming growth factor-beta signaling pathway and is involved in positive and negative feedback regulation of the bone morphogenetic protein signaling pathway. Alternate splicing results in multiple transcript variants.

Recommended Dilutions

WB 1:1000 -
1:2000



Western blot - ZFYVE16 Polyclonal Antibody (A13154)