

## CWC22 Polyclonal Antibody

<b>Catalog No.</b>	A13116	<b>Category</b>	Polyclonal Antibodies
<b>Applications</b>	WB	<b>Observed MW</b>	110kDa
<b>Cross-reactivity</b>	Mouse	<b>Calculated MW</b>	105kDa

### Immunogen Information

<b>Immunogen</b>	Recombinant fusion protein containing a sequence corresponding to amino acids 639-908 of human CWC22 (NP_065994.1).
<b>Gene ID</b>	57703
<b>Swiss prot</b>	Q9HCG8
<b>Synonyms</b>	CWC22; EIF4GL; NCM; fSAPb; pre-mRNA-splicing factor CWC22 homolog

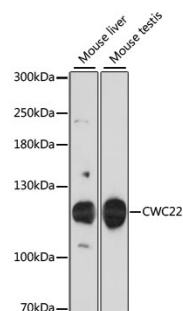
### Product information

<b>Source</b>	Rabbit
<b>Isotype</b>	IgG
<b>Purification method</b>	Affinity purification
<b>Storage</b>	Store at -20°C. Avoid freeze / thaw cycles. Buffer: PBS with 0.02% sodium azide, 50% glycerol, pH7.3.

### Background

### Recommended Dilutions

WB 1:1000 -  
1:2000



Western blot - CWC22 Polyclonal Antibody (A13116)