

## Anti-TAG72 Antibody [B72.3 + CA72/733] - BSA and Azide free (A251543)

### Specifications:

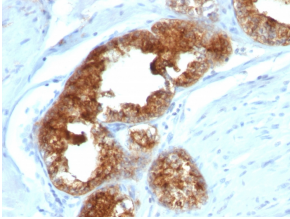
Name:	Anti-TAG72 Antibody [B72.3 + CA72/733] - BSA and Azide free
Description:	Mouse monoclonal [B72.3 + CA72/733] antibody to TAG72.
Specificity:	This antibody recognizes an oncofetal antigen of 220kDa, identified as a tumor-associated glycoprotein (TAG-72) with properties of a mucin. This MAb defines the mucin-carried sialylated-Tn epitope. TAG-72 is usually expressed by adenocarcinomas, but is negative in mesotheliomas. Studies have reported that this antibody has 80% sensitivity and 93% specificity for pulmonary adenocarcinoma. Therefore, TAG-72 is a useful marker to distinguish between mesothelioma and adenocarcinoma. However, positive reactions can occur so results must be interpreted with the utmost caution. This antibody may be useful in the differentiation of non-small cell carcinomas from small cell carcinomas of the lung. The combined use of anti-TAG-72 and anti-GCDFP-15 is valuable in the diagnosis of apocrine carcinoma.
Applications:	IHC-P
Recommended Dilutions:	IHC-P: 1-2 µg/ml
Reactivity:	Huma, Bovine, Canine, Rat
Immunogen:	TAG-72 protein.
Host:	Mouse
Clonality:	Monoclonal
Clone ID:	B72.3 + CA72/733
Isotype:	IgG1
Light Chains:	kappa
Conjugate:	Unconjugated
Purification:	Protein A/G chromatography.
Concentration:	1 mg/ml
Product Form:	Liquid
Formulation:	Supplied in 10mM Phosphate Buffered Saline; without Sodium Azide and carrier free.
Storage:	Shipped at 4°C. Upon delivery aliquot and store at -20°C. Avoid freeze / thaw cycles.
General Notes:	This monoclonal antibody is also available in a different formulation with BSA and Sodium Azide - Anti-TAG72 Antibody [B72.3 + CA72/733] (A248361).

## Anti-TAG72 Antibody [B72.3 + CA72/733] - BSA and Azide free (A251543)

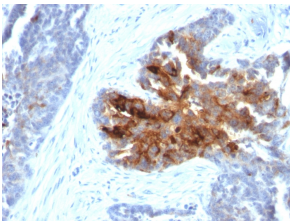
### Specifications continued:

Disclaimer: This product is for research use only. It is not intended for diagnostic or therapeutic use.

### Images:



Immunohistochemical analysis of formalin-fixed, paraffin-embedded human prostate carcinoma using Anti-TAG72 Antibody [B72.3 + CA72/733].



Immunohistochemical analysis of formalin-fixed, paraffin-embedded human ovarian carcinoma using Anti-TAG72 Antibody [B72.3 + CA72/733].