

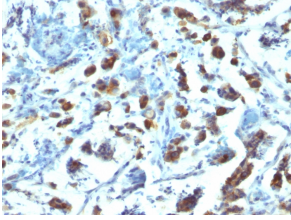
Anti-MUC3 Antibody [SPM200] (A249425)

Specifications:

| | |
|------------------------|--|
| Name: | Anti-MUC3 Antibody [SPM200] |
| Description: | Mouse monoclonal [SPM200] antibody to MUC3. |
| Specificity: | This antibody shows no cross-reaction with human milk fat globule membranes, MUC1, or MUC2. |
| Applications: | Flow Cytometry, IF, IHC-P |
| Recommended Dilutions: | Flow Cytometry: 1-2 µg/million cells, IF: 1-2 µg/ml, IHC-P: 1-2 µg/ml |
| Reactivity: | Human |
| Immunogen: | A synthetic peptide of 35 amino acids, which contains two of the MUC3 tandem repeats, coupled to KLH. |
| Sequence: | C-HSTPSFTSSITTTETTTSHSTPSFTSSITTTETTS |
| Host: | Mouse |
| Clonality: | Monoclonal |
| Clone ID: | SPM200 |
| Isotype: | IgG2a |
| Light Chains: | kappa |
| Conjugate: | Unconjugated |
| Purification: | Protein A/G chromatography. |
| Concentration: | 200 µg/ml |
| Product Form: | Liquid |
| Formulation: | Supplied in 10mM Phosphate Buffered Saline with 0.05% BSA and 0.05% Sodium Azide. |
| Storage: | Shipped at 4°C. Upon delivery aliquot and store at -20°C. Avoid freeze / thaw cycles. |
| General Notes: | This monoclonal antibody is also available in a different formulation without BSA and Sodium Azide - Anti-MUC3 Antibody [SPM200] - BSA and Azide free (A252605). |
| Disclaimer: | This product is for research use only. It is not intended for diagnostic or therapeutic use. |

Anti-MUC3 Antibody [SPM200] (A249425)

Images:



Immunohistochemical analysis of formalin-fixed, paraffin-embedded human gastric carcinoma using Anti-MUC3 Antibody [SPM200].