

LPAR2 Polyclonal Antibody

Catalog No.	A14819	Category	Polyclonal Antibodies
Applications	WB	Observed MW	38kDa
Cross-reactivity	Human	Calculated MW	39kDa

Immunogen Information

Immunogen	A synthetic peptide corresponding to a sequence within amino acids 250-350 of human LPAR2 (NP_004711.2).
Gene ID	9170
Swiss prot	Q9HBW0
Synonyms	LPAR2; EDG-4; EDG4; LPA-2; LPA2; lysophosphatidic acid receptor 2

Product information

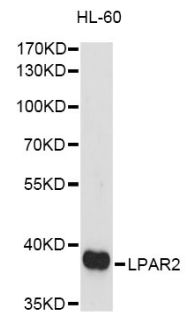
Source	Rabbit
Isotype	IgG
Purification method	Affinity purification
Storage	Store at -20°C. Avoid freeze / thaw cycles. Buffer: PBS with 0.02% sodium azide, 50% glycerol, pH7.3.

Background

This gene encodes a member of family I of the G protein-coupled receptors, as well as the EDG family of proteins. This protein functions as a lysophosphatidic acid (LPA) receptor and contributes to Ca²⁺ mobilization, a critical cellular response to LPA in cells, through association with Gi and Gq proteins. An alternative splice variant has been described but its full length sequence has not been determined.

Recommended Dilutions

WB 1:500 -
1:2000



Western blot - LPAR2 Polyclonal Antibody (A14819)