

HLA-DOB Polyclonal Antibody

Catalog No.	A12152	Category	Polyclonal Antibodies
Applications	WB	Observed MW	31kDa
Cross-reactivity	Human, Mouse, Rat	Calculated MW	30kDa

Immunogen Information

Immunogen	Recombinant fusion protein containing a sequence corresponding to amino acids 27-224 of human HLA-DOB (NP_002111.1).
Gene ID	3112
Swiss prot	P13765
Synonyms	HLA-DOB; DOB; HLA_DOB; major histocompatibility complex, class II, DO beta

Product information

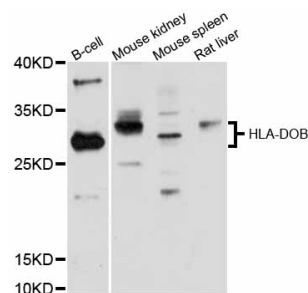
Source	Rabbit
Isotype	IgG
Purification method	Affinity purification
Storage	Store at -20°C. Avoid freeze / thaw cycles. Buffer: PBS with 0.02% sodium azide, 50% glycerol, pH7.3.

Background

HLA-DOB belongs to the HLA class II beta chain paralogues. This class II molecule is a heterodimer consisting of an alpha (DOA) and a beta chain (DOB), both anchored in the membrane. It is located in intracellular vesicles. DO suppresses peptide loading of MHC class II molecules by inhibiting HLA-DM. Class II molecules are expressed in antigen presenting cells (APC: B lymphocytes, dendritic cells, macrophages). The beta chain is approximately 26-28 kDa and its gene contains 6 exons. Exon one encodes the leader peptide, exons 2 and 3 encode the two extracellular domains, exon 4 encodes the transmembrane domain and exon 5 encodes the cytoplasmic tail.

Recommended Dilutions

WB 1:500 -
1:1000



Western blot - HLA-DOB Polyclonal Antibody (A12152)