

BRCA1 Polyclonal Antibody

| | | | |
|-------------------------|-------------|----------------------|--------------------------|
| Catalog No. | A11318 | Category | Polyclonal Antibodies |
| Applications | WB, IHC, IF | Observed MW | 280kDa |
| Cross-reactivity | Human, Rat | Calculated MW | 7kDa/78-85kDa/202-210kDa |

Immunogen Information

| | |
|-------------------|---|
| Immunogen | Recombinant fusion protein containing a sequence corresponding to amino acids 400-699 of human BRCA1 (NP_009230.2). |
| Gene ID | 672 |
| Swiss prot | P38398 |
| Synonyms | BRCA1; BRCAI; BRCC1; BROVCA1; FANCS; IRIS; PNC A4; PPP1R53; PSCP; RNF53; BRCA1, DNA repair associated |

Product information

| | |
|----------------------------|--|
| Source | Rabbit |
| Isotype | IgG |
| Purification method | Affinity purification |
| Storage | Store at -20°C. Avoid freeze / thaw cycles. Buffer: PBS with 0.02% sodium azide, 50% glycerol, pH7.3. |

Background

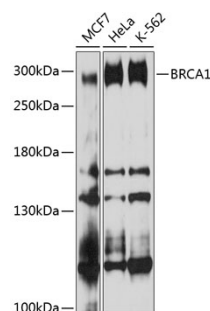
This gene encodes a nuclear phosphoprotein that plays a role in maintaining genomic stability, and it also acts as a tumor suppressor. The encoded protein combines with other tumor suppressors, DNA damage sensors, and signal transducers to form a large multi-subunit protein complex known as the BRCA1-associated genome surveillance complex (BASC). This gene product associates with RNA polymerase II, and through the C-terminal domain, also interacts with histone deacetylase complexes. This protein thus plays a role in transcription, DNA repair of double-stranded breaks, and recombination. Mutations in this gene are responsible for approximately 40% of inherited breast cancers and more than 80% of inherited breast and ovarian cancers. Alternative splicing plays a role in modulating the subcellular localization and physiological function of this gene. Many alternatively spliced transcript variants, some of which are disease-associated mutations, have been described for this gene, but the full-length nature of only some of these variants has been described. A related pseudogene, which is also located on chromosome 17, has been identified.

Recommended Dilutions

WB 1:500 -
1:2000

IHC 1:50 -
1:200

IF 1:50 -
1:200



Western blot - BRCA1 Polyclonal Antibody (A11318)



Immunofluorescence - BRCA1 Polyclonal Antibody (A11318)