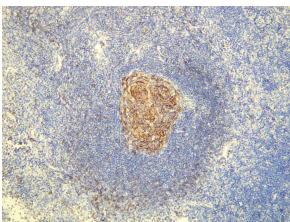


Anti-CD23 Antibody [E28-S] (A8233)

Specifications:

Name:	Anti-CD23 Antibody [E28-S]
Description:	Rabbit monoclonal (E28-S) antibody to CD23.
Specificity:	This antibody recognizes the epitope between Gly295 - His320.
Applications:	IHC-P, IHC-Fr
Recommended Dilutions:	IHC: 1:100-1:300.
Reactivity:	Human
Immunogen:	Peptide derived from C-terminal region of human CD23.
Host:	Rabbit
Clonality:	Monoclonal
Clone ID:	E28-S
Isotype:	IgG
Conjugate:	Unconjugated
Product Form:	Liquid
Formulation:	Supplied in Tris Buffered Saline, pH 8.0, with 20 mg/ml BSA and 0.05% Sodium Azide.
Storage:	Store at 4°C.
Disclaimer:	This product is for research use only. It is not intended for diagnostic or therapeutic use.

Images:



CD23 expression in follicular dendritic cells of the lymph node. Formalin fixed, paraffin embedded human tissue (4µm section) stained with Anti-CD23 Antibody (A8233).