

PDX1 Polyclonal Antibody

Catalog No.	A10173	Category	Polyclonal Antibodies
Applications	WB	Observed MW	39kDa
Cross-reactivity	Human, Mouse, Rat	Calculated MW	30kDa

Immunogen Information

Immunogen	A synthetic peptide corresponding to a sequence within amino acids 1-100 of human PDX1 (NP_000200.1).
Gene ID	3651
Swiss prot	P52945
Synonyms	PDX1; GSF; IDX-1; IPF1; IUF1; MODY4; PAGEN1; PDX-1; STF-1; pancreatic and duodenal homeobox 1

Product information

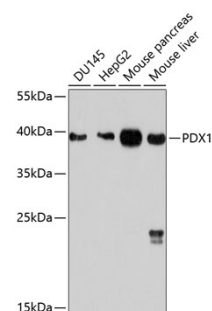
Source	Rabbit
Isotype	IgG
Purification method	Affinity purification
Storage	Store at -20°C. Avoid freeze / thaw cycles. Buffer: PBS with 0.02% sodium azide, 50% glycerol, pH7.3.

Background

The protein encoded by this gene is a transcriptional activator of several genes, including insulin, somatostatin, glucokinase, islet amyloid polypeptide, and glucose transporter type 2. The encoded nuclear protein is involved in the early development of the pancreas and plays a major role in glucose-dependent regulation of insulin gene expression. Defects in this gene are a cause of pancreatic agenesis, which can lead to early-onset insulin-dependent diabetes mellitus (NIDDM), as well as maturity onset diabetes of the young type 4 (MODY4).

Recommended Dilutions

WB 1:500 -
1:1000



Western blot - PDX1 Polyclonal Antibody (A10173)