

TMEM27 Polyclonal Antibody

Catalog No.	A12715	Category	Polyclonal Antibodies
Applications	WB	Observed MW	29kDa
Cross-reactivity	Mouse, Rat	Calculated MW	25kDa

Immunogen Information

Immunogen	Recombinant fusion protein containing a sequence corresponding to amino acids 1-222 of human TMEM27 (NP_065716.1).
Gene ID	57393
Swiss prot	Q9HBJ8
Synonyms	TMEM27; NX-17; NX17; collectrin

Product information

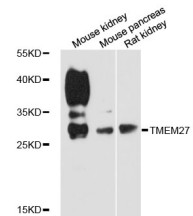
Source	Rabbit
Isotype	IgG
Purification method	Affinity purification
Storage	Store at -20°C. Avoid freeze / thaw cycles. Buffer: PBS with 0.02% sodium azide, 50% glycerol, pH7.3.

Background

This gene encodes a type 1 transmembrane protein that is important for trafficking amino acid transporters to the apical brush border of proximal tubules. The encoded protein binds to amino acid transporters and regulates their expression on the plasma membrane. It also plays a role in controlling insulin exocytosis by regulating formation of the SNARE (soluble N-ethylmaleimide-sensitive-factor attachment protein receptor) complex in pancreatic beta cells. The extracellular domain of the encoded protein may be cleaved and shed from the plasma membrane specifically in pancreatic beta cells.

Recommended Dilutions

WB 1:500 - 1:2000



Western blot - TMEM27 Polyclonal Antibody (A12715)