

UBE2H Polyclonal Antibody

Catalog No.	A7344	Category	Polyclonal Antibodies
Applications	WB, IF	Observed MW	21-42kDa
Cross-reactivity	Human, Mouse, Rat	Calculated MW	17kDa/20kDa

Immunogen Information

Immunogen	Recombinant fusion protein containing a sequence corresponding to amino acids 1-183 of human UBE2H (NP_003335.1).
Gene ID	7328
Swiss prot	P62256
Synonyms	UBE2H; E2-20K; GID3; UBC8; UBCH; UBCH2; ubiquitin-conjugating enzyme E2 H

Product information

Source	Rabbit
Isotype	IgG
Purification method	Affinity purification
Storage	Store at -20°C. Avoid freeze / thaw cycles. Buffer: PBS with 0.02% sodium azide, 50% glycerol, pH7.3.

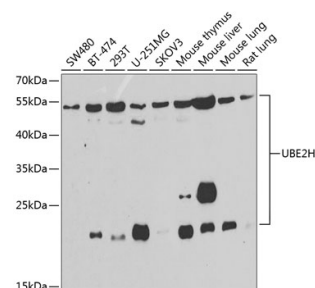
Background

The modification of proteins with ubiquitin is an important cellular mechanism for targeting abnormal or short-lived proteins for degradation. Ubiquitination involves at least three classes of enzymes: ubiquitin-activating enzymes, or E1s, ubiquitin-conjugating enzymes, or E2s, and ubiquitin-protein ligases, or E3s. This gene encodes a member of the E2 ubiquitin-conjugating enzyme family. The encoded protein sequence is 100% identical to the mouse homolog and 98% identical to the frog and zebrafish homologs. Three alternatively spliced transcript variants have been found for this gene and they encode distinct isoforms.

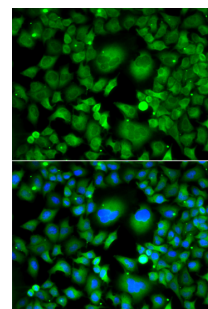
Recommended Dilutions

WB 1:500 -
1:2000

IF 1:50 -
1:200



Western blot - UBE2H Polyclonal Antibody (A7344)



Immunofluorescence - UBE2H Polyclonal Antibody (A7344)