

SET Polyclonal Antibody

Catalog No.	A12502	Category	Polyclonal Antibodies
Applications	WB, IHC, IF	Observed MW	34kDa
Cross-reactivity	Human, Mouse, Rat	Calculated MW	30kDa/31kDa/32kDa/33kDa

Immunogen Information

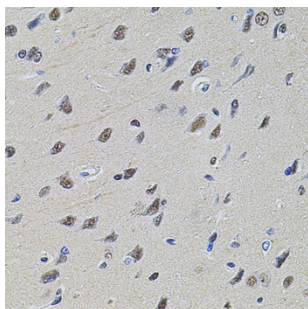
Immunogen	Recombinant fusion protein containing a sequence corresponding to amino acids 146-277 of human SET (NP_003002.2).
Gene ID	6418
Swiss prot	Q01105
Synonyms	SET; 2PP2A; I2PP2A; IGAAD; IPP2A2; PHAPII; TAF-I; TAF-IBETA; protein SET

Product information

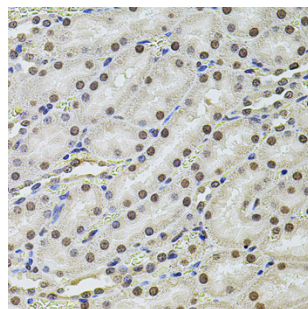
Source	Rabbit
Isotype	IgG
Purification method	Affinity purification
Storage	Store at -20°C. Avoid freeze / thaw cycles. Buffer: PBS with 0.02% sodium azide, 50% glycerol, pH7.3.

Background

The protein encoded by this gene inhibits acetylation of nucleosomes, especially histone H4, by histone acetylases (HAT). This inhibition is most likely accomplished by masking histone lysines from being acetylated, and the consequence is to silence HAT-dependent transcription. The encoded protein is part of a complex localized to the endoplasmic reticulum but is found in the nucleus and inhibits apoptosis following attack by cytotoxic T lymphocytes. This protein can also enhance DNA replication of the adenovirus genome. Several transcript variants encoding different isoforms have been found for this gene.



Immunohistochemistry - SET Polyclonal Antibody (A12502)



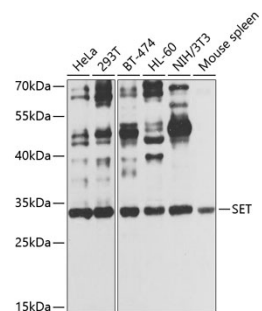
Immunohistochemistry - SET Polyclonal Antibody (A12502)

Recommended Dilutions

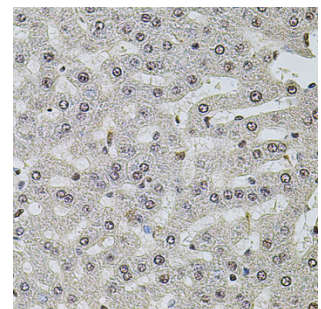
WB 1:500 -
1:2000

IHC 1:50 -
1:200

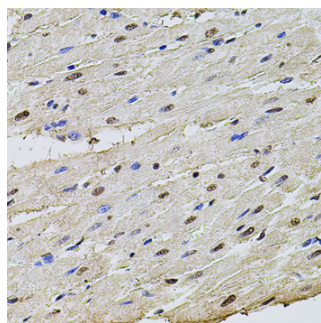
IF 1:50 -
1:200



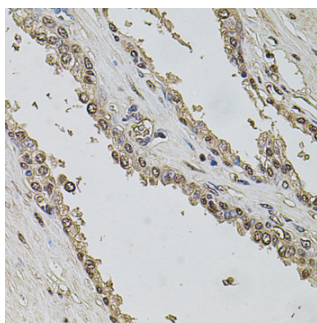
Western blot - SET Polyclonal Antibody (A12502)



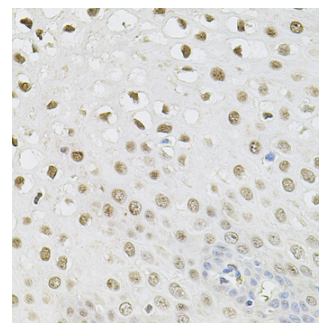
Immunohistochemistry - SET Polyclonal Antibody (A12502)



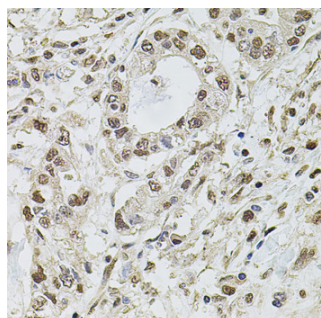
Immunohistochemistry - SET Polyclonal Antibody (A12502)



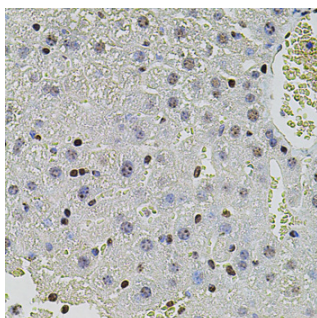
Immunohistochemistry - SET Polyclonal Antibody (A12502)



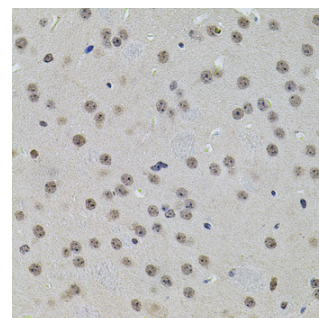
Immunohistochemistry - SET Polyclonal Antibody (A12502)



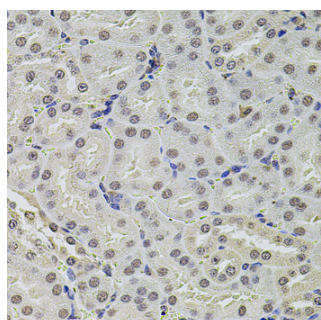
Immunohistochemistry - SET Polyclonal Antibody (A12502)



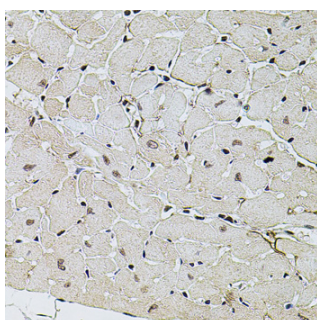
Immunohistochemistry - SET Polyclonal Antibody (A12502)



Immunohistochemistry - SET Polyclonal Antibody (A12502)



Immunohistochemistry - SET Polyclonal Antibody (A12502)



Immunohistochemistry - SET Polyclonal Antibody (A12502)