

HLA-DRB1 Polyclonal Antibody

Catalog No.	A7685	Category	Polyclonal Antibodies
Applications	WB, IF	Observed MW	30kDa
Cross-reactivity	Human, Mouse	Calculated MW	30kDa

Immunogen Information

Immunogen	Recombinant fusion protein containing a sequence corresponding to amino acids 30-230 of human HLA-DRB1 (NP_002115.2).
Gene ID	3123
Swiss prot	P01911/P01912/Q29974
Synonyms	HLA-DRB1; DRB1; HLA-DR1B; HLA-DRB; SS1; major histocompatibility complex, class II, DR beta 1

Product information

Source	Rabbit
Isotype	IgG
Purification method	Affinity purification
Storage	Store at -20°C. Avoid freeze / thaw cycles. Buffer: PBS with 0.02% sodium azide, 50% glycerol, pH7.3.

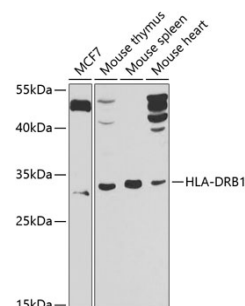
Background

HLA-DRB1 belongs to the HLA class II beta chain paralogs. The class II molecule is a heterodimer consisting of an alpha (DRA) and a beta chain (DRB), both anchored in the membrane. It plays a central role in the immune system by presenting peptides derived from extracellular proteins. Class II molecules are expressed in antigen presenting cells (APC: B lymphocytes, dendritic cells, macrophages). The beta chain is approximately 26-28 kDa. It is encoded by 6 exons. Exon one encodes the leader peptide; exons 2 and 3 encode the two extracellular domains; exon 4 encodes the transmembrane domain; and exon 5 encodes the cytoplasmic tail. Within the DR molecule the beta chain contains all the polymorphisms specifying the peptide binding specificities. Hundreds of DRB1 alleles have been described and typing for these polymorphisms is routinely done for bone marrow and kidney transplantation. DRB1 is expressed at a level five times higher than its paralogs DRB3, DRB4 and DRB5. DRB1 is present in all individuals. Allelic variants of DRB1 are linked with either none or one of the genes DRB3, DRB4 and DRB5. There are 4 related pseudogenes: DRB2, DRB6, DRB7, DRB8 and DRB9.

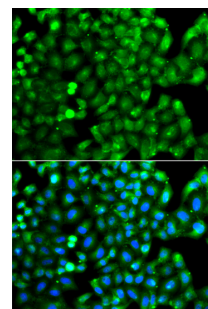
Recommended Dilutions

WB 1:500 -
1:2000

IF 1:50 -
1:100



Western blot - HLA-DRB1 Polyclonal Antibody (A7685)



Immunofluorescence - HLA-DRB1 Polyclonal Antibody (A7685)