

## MLN Polyclonal Antibody

<b>Catalog No.</b>	A6388	<b>Category</b>	Polyclonal Antibodies
<b>Applications</b>	WB, IHC, IF	<b>Observed MW</b>	13kDa
<b>Cross-reactivity</b>	Human, Mouse	<b>Calculated MW</b>	12kDa

### Immunogen Information

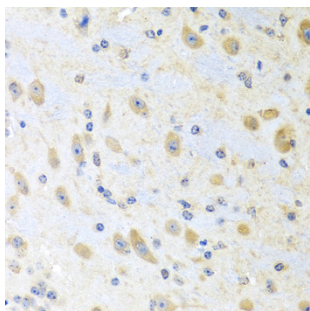
<b>Immunogen</b>	Recombinant fusion protein containing a sequence corresponding to amino acids 26-115 of human MLN (NP_002409.1).
<b>Gene ID</b>	4295
<b>Swiss prot</b>	P12872
<b>Synonyms</b>	MLN; motilin

### Product information

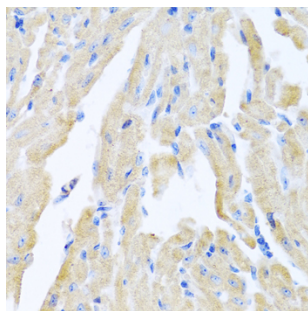
<b>Source</b>	Rabbit
<b>Isotype</b>	IgG
<b>Purification method</b>	Affinity purification
<b>Storage</b>	Store at -20°C. Avoid freeze / thaw cycles. Buffer: PBS with 0.02% sodium azide, 50% glycerol, pH7.3.

### Background

This gene encodes a small peptide hormone that is secreted by cells of the small intestine to regulate gastrointestinal contractions and motility. Proteolytic processing of the secreted protein produces the mature peptide and a byproduct referred to as motilin-associated peptide (MAP). Three transcript variants encoding different preproprotein isoforms but the same mature peptide have been found for this gene.



Immunohistochemistry - MLN Polyclonal Antibody (A6388)



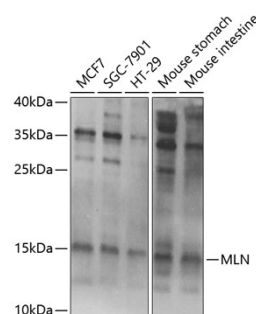
Immunohistochemistry - MLN Polyclonal Antibody (A6388)

### Recommended Dilutions

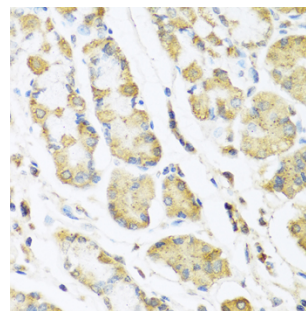
WB 1:500 -  
1:2000

IHC 1:50 -  
1:100

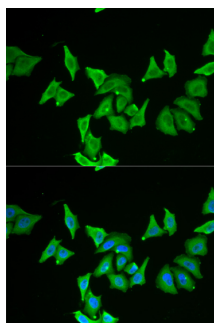
IF 1:50 -  
1:100



Western blot - MLN Polyclonal Antibody (A6388)



Immunohistochemistry - MLN Polyclonal Antibody (A6388)



Immunofluorescence - MLN Polyclonal  
Antibody (A6388)