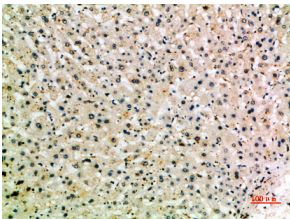


## Anti-MSR1 Antibody (A97777)

### Specifications:

Name:	Anti-MSR1 Antibody
Description:	Rabbit polyclonal antibody to MSR1.
Applications:	IHC, ELISA
Recommended Dilutions:	IHC-P: 1:50-1:300, ELISA: 1:10000
Reactivity:	Human, Mouse, Rat
Immunogen:	Synthetic peptide derived from the Internal region of human MSR1 (amino acids 241-290).
Host:	Rabbit
Clonality:	Polyclonal
Isotype:	IgG
Conjugate:	Unconjugated
Purification:	The antibody was affinity-purified from rabbit antiserum by affinity-chromatography using epitope-specific peptide.
Molecular Weight:	49kDa
Product Form:	Liquid
Formulation:	Supplied in Phosphate Buffered Saline (without Mg <sup>2+</sup> and Ca <sup>2+</sup> ), pH 7.4, with 150mM NaCl, 0.02% Sodium Azide, and 50% Glycerol.
Storage:	Shipped at 4°C. Upon delivery aliquot and store at -20°C. Avoid freeze / thaw cycles.
Disclaimer:	This product is for research use only. It is not intended for diagnostic or therapeutic use.

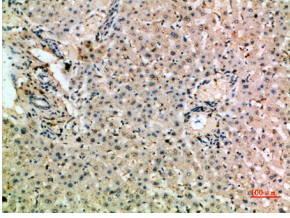
### Images:



Immunohistochemical analysis of paraffin-embedded human liver using Anti-MSR1 Antibody.

## Anti-MSR1 Antibody (A97777)

Images continued:



Immunohistochemical analysis of paraffin-embedded human liver using Anti-MSR1 Antibody.