

## TCF21 Polyclonal Antibody

<b>Catalog No.</b>	A17451	<b>Category</b>	Polyclonal Antibodies
<b>Applications</b>	WB	<b>Observed MW</b>	20kDa
<b>Cross-reactivity</b>	Human, Rat	<b>Calculated MW</b>	20kDa

### Immunogen Information

<b>Immunogen</b>	Recombinant protein of human TCF21.
<b>Gene ID</b>	6943
<b>Swiss prot</b>	O43680
<b>Synonyms</b>	POD1; bHLHa23

### Product information

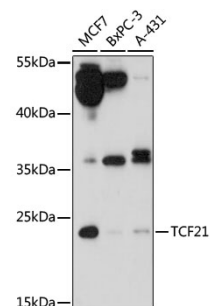
<b>Source</b>	Rabbit
<b>Isotype</b>	IgG
<b>Purification method</b>	Affinity purification
<b>Storage</b>	Store at -20°C. Avoid freeze / thaw cycles. Buffer: PBS with 0.02% sodium azide, 50% glycerol, pH7.3.

### Background

TCF21 encodes a transcription factor of the basic helix-loop-helix family. The TCF21 product is mesoderm specific, and expressed in embryonic epicardium, mesenchyme-derived tissues of lung, gut, gonad, and both mesenchymal and glomerular epithelial cells in the kidney. Two transcript variants encoding the same protein have been found for this gene.

### Recommended Dilutions

WB 1:500 -  
1:2000



Western blot - TCF21 Polyclonal Antibody (A17451)