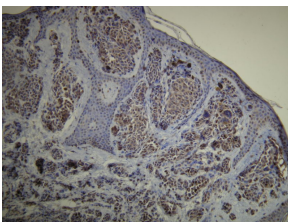


Anti-S-100 Antibody [D28-E] (A8203)

Specifications:

Name:	Anti-S-100 Antibody [D28-E]
Description:	Rabbit monoclonal (D28-E) antibody to S-100.
Specificity:	This antibody recognizes the epitope between Val55 - Glu74.
Applications:	IHC-P, IHC-Fr
Recommended Dilutions:	IHC: 1:100-1:200.
Reactivity:	Human
Immunogen:	Peptide derived from C-terminal sequence of human S100-A1 protein.
Host:	Rabbit
Clonality:	Monoclonal
Clone ID:	D28-E
Isotype:	IgG
Conjugate:	Unconjugated
Product Form:	Liquid
Formulation:	Supplied in Tris Buffered Saline, pH 8.0, with 20 mg/ml BSA and 0.05% Sodium Azide.
Storage:	Store at 4°C.
Disclaimer:	This product is for research use only. It is not intended for diagnostic or therapeutic use.

Images:



S-100 protein expression in the cutaneous malignant melanoma. Formalin fixed, paraffin embedded human tissue (4µm section) stained with Anti-S-100 Antibody (A8203).