

MAB040Hu22

Monoclonal Antibody to Vimentin (VIM)

Organism Species: *Homo sapiens* (Human)

Instruction manual

FOR RESEARCH USE ONLY

NOT FOR USE IN CLINICAL DIAGNOSTIC PROCEDURES

13th Edition (Revised in Aug, 2023)

[PROPERTIES]

Source: Monoclonal antibody preparation

Host: Mouse

Antibody isotype: IgG2b Kappa

Purification: Protein A + Protein G affinity chromatography

Clone number: C12

Traits: Liquid

Concentration: 1mg/ml

UOM: 100µl

Cross Reactivity: Rat; Porcine.

Applications: WB; IHC; IF

[IMMUNOGEN]

Immunogen: Recombinant VIM (Ser2~Glu466) expressed in *E.coli*

Accession No.: RPB040Hu01

[APPLICATIONS]

Western blotting: 0.01-2µg/mL;

Immunohistochemistry: 5-20µg/mL;

Immunofluorescence:5-40µg/mL;

Optimal working dilutions must be determined by end user.

[FORMULATION]

Form & Buffer: Supplied as solution form in PBS, pH7.4, containing 0.02% NaN₃, 50% glycerol.

[STORAGE AND STABILITY]

Storage: Avoid repeated freeze/thaw cycles.

Store at 4°C for frequent use.

Aliquot and store at -20°C for 24 months.

Stability Test: The thermal stability is described by the loss rate. The loss rate was determined

by accelerated thermal degradation test, that is, incubate the protein at 37°C for 48h, and no obvious degradation and precipitation were observed. The loss rate is less than 5% within the expiration date under appropriate storage condition.

[IDENTIFICATION]

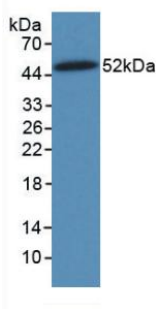
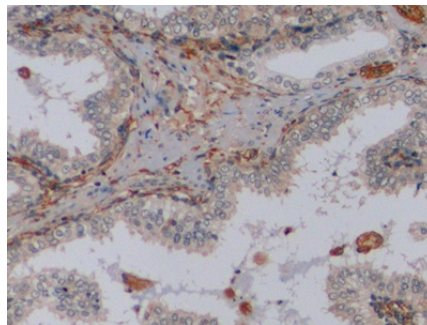
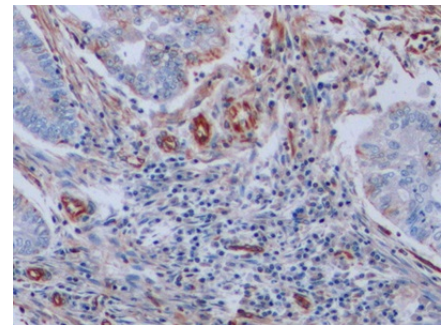


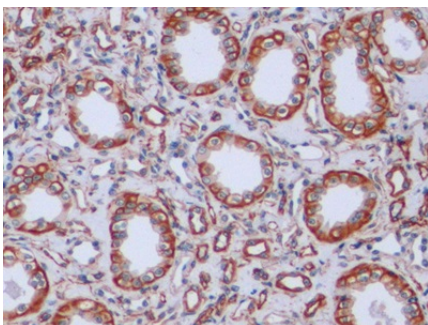
Figure. Western Blot; Sample: Recombinant VIM, Human.



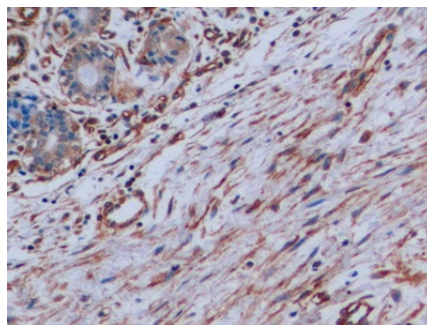
DAB staining on IHC-P;
Samples: Human Prostate Tissue;
Primary Ab: 10µg/ml Mouse Anti-Human VIM Antibody
Second Ab: 2µg/mL HRP-Linked Caprine Anti-Mouse IgG Polyclonal Antibody
(Catalog: SAA544Mu19)



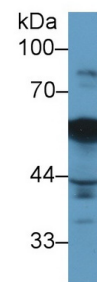
DAB staining on IHC-P;
Samples: Human Endometrial cancer Tissue;
Primary Ab: 10µg/ml Mouse Anti-Human VIM Antibody
Second Ab: 2µg/mL HRP-Linked Caprine Anti-Mouse IgG Polyclonal Antibody
(Catalog: SAA544Mu19)



DAB staining on IHC-P;
Samples: Human Kidney Tissue;
Primary Ab: 10µg/ml Mouse Anti-Human VIM Antibody
Second Ab: 2µg/mL HRP-Linked Caprine Anti-Mouse IgG Polyclonal Antibody

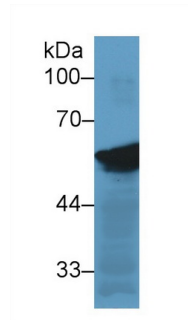


DAB staining on IHC-P;
Samples: Human Breast cancer Tissue;
Primary Ab: 10µg/ml Mouse Anti-Human VIM Antibody
Second Ab: 2µg/mL HRP-Linked Caprine Anti-Mouse IgG Polyclonal Antibody

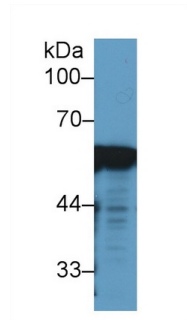


Western Blot; Sample: Rat Heart lysate;
Primary Ab: 2µg/ml Mouse Anti-Human VIM Antibody
Second Ab: 0.2µg/mL HRP-Linked Caprine Anti-Mouse IgG Polyclonal Antibody
(Catalog: SAA544Mu19)

(Catalog: SAA544Mu19)



(Catalog: SAA544Mu19)



Western Blot; Sample: Human HeLa cell lysate;

Western Blot; Sample: Human 293T cell lysate;

Western Blot; Sample: Porcine Heart lysate;

Primary Ab: 2µg/ml Mouse Anti-Human VIM Antibody

Primary Ab: 2µg/ml Mouse Anti-Human VIM Antibody

Primary Ab: 2µg/ml Mouse Anti-Human VIM Antibody

Second Ab: 0.2µg/mL HRP-Linked Caprine Anti-Mouse IgG Polyclonal Antibody

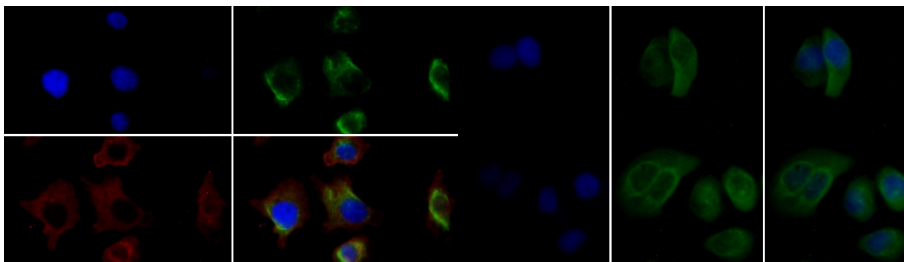
Second Ab: 0.2µg/mL HRP-Linked Caprine Anti-Mouse IgG Polyclonal Antibody

Second Ab: 0.2µg/mL HRP-Linked Caprine Anti-Mouse IgG Polyclonal Antibody

(Catalog: SAA544Mu19)

(Catalog: SAA544Mu19)

(Catalog: SAA544Mu19)



FITC and CY3 staining on IF; Sample: Human HepG2 cell; Primary Ab: 40µg/ml Mouse Anti-Human VIM Antibody; Second Ab: 1µg/ml FITC-Linked Caprine Anti-Mouse IgG Polyclonal Antibody (Catalog: SAA544Mu18)

FITC staining on IF; Samples: Human MCF7 Cells; Primary Ab: 40µg/ml Mouse Anti-Human VIM Antibody; Second Ab: 1µg/ml FITC-Linked Caprine Anti-Mouse IgG Polyclonal Antibody (Catalog: SAA544Mu18)

[IMPORTANT NOTE]

The kit is designed for research use only, we will not be responsible for any issue if the kit was used in clinical diagnostic or any other procedures.