

## SKP1 Polyclonal Antibody

<b>Catalog No.</b>	A12518	<b>Category</b>	Polyclonal Antibodies
<b>Applications</b>	WB	<b>Observed MW</b>	19kDa
<b>Cross-reactivity</b>	Human, Mouse, Rat	<b>Calculated MW</b>	18kDa

### Immunogen Information

<b>Immunogen</b>	Recombinant protein of human SKP1
<b>Gene ID</b>	6500
<b>Swiss prot</b>	P63208
<b>Synonyms</b>	SKP1; EMC19; OCP-II; OCP2; SKP1A; TCEB1L; p19A ; S-phase kinase-associated protein 1

### Product information

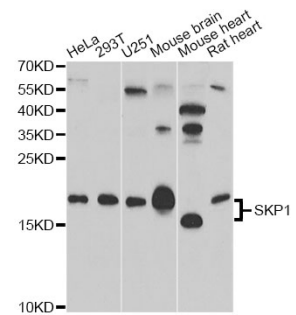
<b>Source</b>	Rabbit
<b>Isotype</b>	IgG
<b>Purification method</b>	Affinity purification
<b>Storage</b>	Store at -20°C. Avoid freeze / thaw cycles. Buffer: PBS with 0.02% sodium azide, 50% glycerol, pH7.3.

### Background

This gene encodes a component of SCF complexes, which are composed of this protein, cullin 1, a ring-box protein, and one member of the F-box family of proteins. This protein binds directly to the F-box motif found in F-box proteins. SCF complexes are involved in the regulated ubiquitination of specific protein substrates, which targets them for degradation by the proteasome. Specific F-box proteins recognize different target protein(s), and many specific SCF substrates have been identified including regulators of cell cycle progression and development. Studies have also characterized the protein as an RNA polymerase II elongation factor. Alternative splicing of this gene results in two transcript variants. A related pseudogene has been identified on chromosome 7.

### Recommended Dilutions

WB 1:500 -  
1:2000



Western blot - SKP1 Polyclonal Antibody (A12518)