

Catalogue No. AB0124

Cre Recombinase Polyclonal Antibody

Source: Goat

General description: Goat polyclonal antibody to Cre recombinase. Cre recombinase is a tyrosine recombinase enzyme derived from the P1 bacteriophage. The enzyme (38 kDa) is a member of the Integrase family of site specific recombinase and it is known to catalyse the site specific recombination event between two DNA recognition sites (loxP sites).

Alternative names: Cyclization recombinase antibody.

Form: Polyclonal antibody supplied as a 500 µl (3 mg/ml) aliquot in PBS, 20% glycerol and 0.05%

sodium azide. This antibody is epitope-affinity purified from goat antiserum.

Immunogen: Purified recombinant peptide produced in *E. coli*.

Specificity: In 293HEK cells transduced with Ad-Cre detects a band of 38 kDa by Western blot and gives a positive signal for the Cre recombinase protein.

Reactivity: Bacteriophage P1.

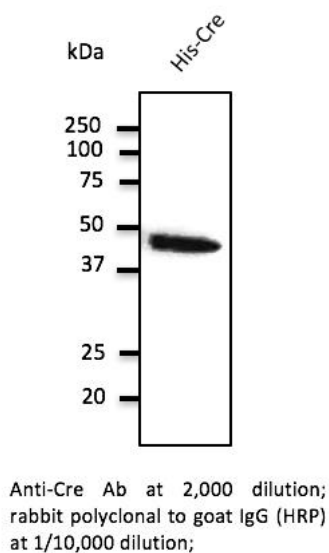
Sample	Western blot	Immuno-fluorescence	Histochemistry (paraffin)	Histochemistry (frozen)
Transfected cells	+++	ND	ND	ND

+++ excellent, ++ good, + poor, ND not determined

Usage: Western blot 1:500-1:2,000
Immunofluorescence ND
Immunohistochemistry (paraffin) ND
Immunohistochemistry (frozen) ND

Storage: Store at -20 C for long-term storage. Store at 2-8 C for up to one month.

Special instructions: Avoid freeze/thaw cycles.



For research use only, not for diagnostic use

SICGEN's Proprietary Immunogen Policy

In order to produce high specific antibodies SICGEN has invested a lot of time and effort into selecting immunogen sequences. SICGEN has decided to protect this information by not publishing it on the website. However, these sequences are available on request.