

COMP Polyclonal Antibody

Catalog No.	A5812	Category	Polyclonal Antibodies
Applications	WB, IF	Observed MW	110kDa
Cross-reactivity	Human, Mouse, Rat	Calculated MW	77kDa/82kDa

Immunogen Information

Immunogen	Recombinant fusion protein containing a sequence corresponding to amino acids 20-160 of human COMP (NP_000086.2).
Gene ID	1311
Swiss prot	P49747
Synonyms	COMP; EDM1; EPD1; MED; PSACH; THBS5; TSP5; cartilage oligomeric matrix protein

Product information

Source	Rabbit
Isotype	IgG
Purification method	Affinity purification
Storage	Store at -20°C. Avoid freeze / thaw cycles. Buffer: PBS with 0.02% sodium azide, 50% glycerol, pH7.3.

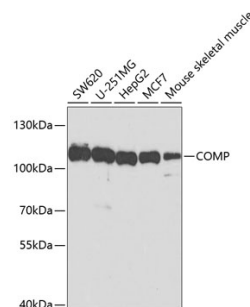
Background

The protein encoded by this gene is a noncollagenous extracellular matrix (ECM) protein. It consists of five identical glycoprotein subunits, each with EGF-like and calcium-binding (thrombospondin-like) domains. Oligomerization results from formation of a five-stranded coiled coil and disulfides. Binding to other ECM proteins such as collagen appears to depend on divalent cations. Contraction or expansion of a 5 aa aspartate repeat and other mutations can cause pseudoachondroplasia (PSACH) and multiple epiphyseal dysplasia (MED).

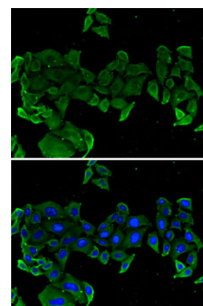
Recommended Dilutions

WB 1:500 -
1:2000

IF 1:10 -
1:100



Western blot - COMP Polyclonal Antibody (A5812)



Immunofluorescence - COMP Polyclonal Antibody (A5812)