

## Phospho-Btk-Y223 pAb

<b>Catalog No.</b>	AP0100	<b>Category</b>	Phosphorylated Antibodies
<b>Applications</b>	WB, IF	<b>Observed MW</b>	Refer to Figures
<b>Cross-reactivity</b>	Human, Mouse, Rat	<b>Calculated MW</b>	76kDa/79kDa

### Immunogen Information

<b>Immunogen</b>	A phospho specific peptide corresponding to residues surrounding Y223 of human Btk
<b>Gene ID</b>	695
<b>Swiss prot</b>	Q06187
<b>Synonyms</b>	BTK; AGMX1; AT; ATK; BPK; IMD1; PSCTK1; XLA; B ruton tyrosine kinase

### Product information

<b>Source</b>	Rabbit
<b>Isotype</b>	IgG
<b>Purification method</b>	Affinity purification
<b>Storage</b>	Store at -20°C. Avoid freeze / thaw cycles. Buffer: PBS with 0.02% sodium azide, 50% glycerol, pH7.3.

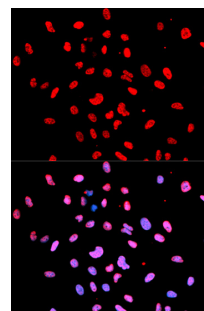
### Background

The protein encoded by this gene plays a crucial role in B-cell development. Mutations in this gene cause X-linked agammaglobulinemia type 1, which is an immunodeficiency characterized by the failure to produce mature B lymphocytes, and associated with a failure of Ig heavy chain rearrangement. Alternative splicing results in multiple transcript variants encoding different isoforms.

### Recommended Dilutions

WB 1:500 -  
1:2000

IF 1:20 -  
1:100



Immunofluorescence - Phospho-Btk-Y223 pAb (AP0100)