

PTPRO Polyclonal Antibody

Catalog No.	A6958	Category	Polyclonal Antibodies
Applications	WB	Observed MW	150kDa
Cross-reactivity	Human, Mouse	Calculated MW	43kDa/47kDa/67kDa/134kDa/138kDa

Immunogen Information

Immunogen	Recombinant fusion protein containing a sequence corresponding to amino acids 30-300 of human PTPRO (NP_109592.1).
Gene ID	5800
Swiss prot	Q16827
Synonyms	PTPRO; GLEPP1; NPHS6; PTP-OC; PTP-U2; PTPROT; PTPU2; R-PTP-O; receptor-type tyrosine-protein phosphatase O

Product information

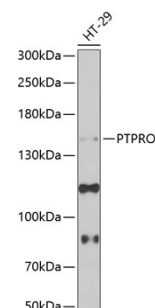
Source	Rabbit
Isotype	IgG
Purification method	Affinity purification
Storage	Store at -20°C. Avoid freeze / thaw cycles. Buffer: PBS with 0.02% sodium azide, 50% glycerol, pH7.3.

Background

This gene encodes a member of the R3 subtype family of receptor-type protein tyrosine phosphatases. These proteins are localized to the apical surface of polarized cells and may have tissue-specific functions through activation of Src family kinases. This gene contains two distinct promoters, and alternatively spliced transcript variants encoding multiple isoforms have been observed. The encoded proteins may have multiple isoform-specific and tissue-specific functions, including the regulation of osteoclast production and activity, inhibition of cell proliferation and facilitation of apoptosis. This gene is a candidate tumor suppressor, and decreased expression of this gene has been observed in several types of cancer.

Recommended Dilutions

WB 1:500 -
1:2000



Western blot - PTPRO Polyclonal Antibody (A6958)