

## PMF1 Polyclonal Antibody

<b>Catalog No.</b>	A17095	<b>Category</b>	Polyclonal Antibodies
<b>Applications</b>	WB	<b>Observed MW</b>	Refer to figures
<b>Cross-reactivity</b>	Human	<b>Calculated MW</b>	

### Immunogen Information

<b>Immunogen</b>	Recombinant protein of human PMF1.
<b>Gene ID</b>	11243
<b>Swiss prot</b>	Q6P1K2
<b>Synonyms</b>	PMF1; polyamine-modulated factor 1

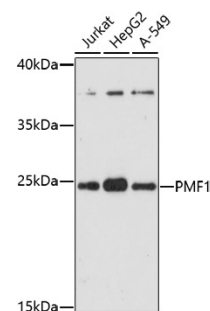
### Product information

<b>Source</b>	Rabbit
<b>Isotype</b>	IgG
<b>Purification method</b>	Affinity purification
<b>Storage</b>	Store at -20°C. Avoid freeze / thaw cycles. Buffer: PBS with 0.02% sodium azide, 50% glycerol, pH7.3.

### Background

### Recommended Dilutions

WB 1:500 -  
1:2000



Western blot - PMF1 Polyclonal Antibody (A17095)