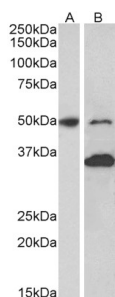


Anti-MKRN1 Antibody (A82810)

Specifications:

Name:	Anti-MKRN1 Antibody
Description:	Goat polyclonal antibody to MKRN1.
Applications:	ELISA, WB
Reactivity:	Human, Mouse
Immunogen:	Synthetic peptide corresponding to Human MKRN1 (internal region).
Sequence:	C-RYEHKPLKQEEAT
Host:	Goat
Clonality:	Polyclonal
Isotype:	IgG
Conjugate:	Unconjugated
Purification:	Purified from goat serum by ammonium sulphate precipitation followed by antigen affinity chromatography using the immunizing peptide.
Concentration:	100 µg at 0.5 mg/ml.
Product Form:	Liquid
Formulation:	Supplied in Tris Buffered Saline, pH 7.30, with 0.02% Sodium Azide and 0.5% BSA.
Storage:	Shipped at 4°C. Upon delivery aliquot and store at -20°C. Avoid freeze / thaw cycles.
Disclaimer:	This product is for research use only. It is not intended for diagnostic or therapeutic use.

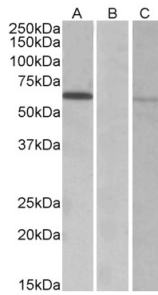
Images:



Anti-MKRN1 Antibody (A82810) (1µg/ml) staining of Mouse fetal (A) and adult (B) Brain lysates (35µg protein in RIPA buffer). Primary incubation was 1 hour. Detected by chemiluminescence.

Anti-MKRN1 Antibody (A82810)

Images continued:



HEK293 lysate (10ug protein in RIPA buffer) over expressing Human MKRN1 with DYKDDDDK tag probed with Anti-MKRN1 Antibody (A82810) (0.3µg/ml) in Lane A and probed with anti- DYKDDDDK Tag (1/1000) in lane C. Mock-transfected HEK293 probed with Anti-MKRN1 Antibody (A82810) (1mg/ml) in Lane B. Primary incubations were for 1 hour. Detected by chemiluminescence.