

## MLKL Monoclonal Antibody

<b>Catalog No.</b>	A11458	<b>Category</b>	Monoclonal Antibodies
<b>Applications</b>	WB, IHC, IF	<b>Observed MW</b>	54kDa
<b>Cross-reactivity</b>	Human	<b>Calculated MW</b>	30kDa/54kDa

### Immunogen Information

<b>Immunogen</b>	Recombinant protein of human MLKL
<b>Gene ID</b>	197259
<b>Swiss prot</b>	Q8NB16
<b>Synonyms</b>	MLKL; hMLKL; mixed lineage kinase domain-like protein

### Product information

<b>Source</b>	Rabbit
<b>Isotype</b>	IgG
<b>Purification method</b>	Affinity purification
<b>Storage</b>	Store at -20°C. Avoid freeze / thaw cycles. Buffer: PBS with 0.02% sodium azide, 50% glycerol, pH7.3.

### Background

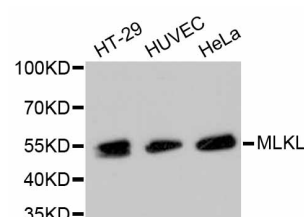
This gene belongs to the protein kinase superfamily. The encoded protein contains a protein kinase-like domain; however, is thought to be inactive because it lacks several residues required for activity. This protein plays a critical role in tumor necrosis factor (TNF)-induced necroptosis, a programmed cell death process, via interaction with receptor-interacting protein 3 (RIP3), which is a key signaling molecule in necroptosis pathway. Inhibitor studies and knockdown of this gene inhibited TNF-induced necrosis. High levels of this protein and RIP3 are associated with inflammatory bowel disease in children. Alternatively spliced transcript variants have been described for this gene.

### Recommended Dilutions

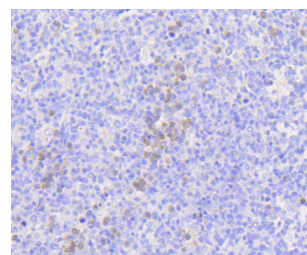
WB 1:500 -  
1:2000

IHC 1:50 -  
1:200

IF 1:50 -  
1:200



Western blot - MLKL Monoclonal Antibody (A11458)



Immunohistochemistry - MLKL Monoclonal Antibody (A11458)