

ARSF Polyclonal Antibody

| | | | |
|-------------------------|-------------------|----------------------|-----------------------|
| Catalog No. | A8102 | Category | Polyclonal Antibodies |
| Applications | WB, IHC | Observed MW | 66kDa |
| Cross-reactivity | Human, Mouse, Rat | Calculated MW | 65kDa |

Immunogen Information

Immunogen Recombinant fusion protein containing a sequence corresponding to amino acids 1-200 of human ARSF (NP_004033.2).

Gene ID 416

Swiss prot P54793

Synonyms ARSF; ASF; arylsulfatase F

Product information

Source Rabbit

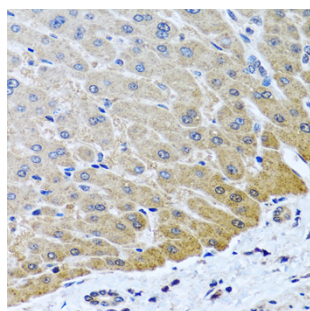
Isotype IgG

Purification method Affinity purification

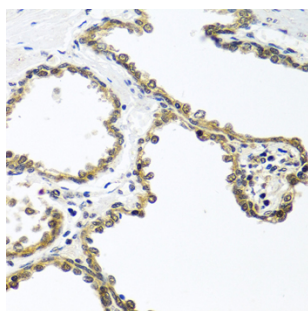
Storage Store at -20°C. Avoid freeze / thaw cycles.
Buffer: PBS with 0.02% sodium azide, 50% glycerol, pH7.3.

Background

This gene is a member of the sulfatase family, and more specifically, the arylsulfatase subfamily. Members of the subfamily share similarity in sequence and splice sites, and are clustered together on chromosome X, suggesting that they are derived from recent gene duplication events. Sulfatases are essential for the correct composition of bone and cartilage matrix. The activity of this protein, unlike that of arylsulfatase E, is not inhibited by warfarin. Multiple alternatively spliced variants, encoding the same protein, have been identified.



Immunohistochemistry - ARSF Polyclonal Antibody (A8102)

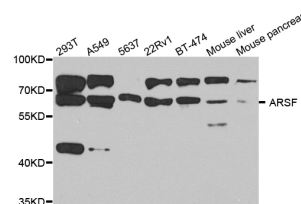


Immunohistochemistry - ARSF Polyclonal Antibody (A8102)

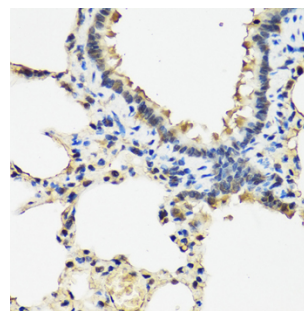
Recommended Dilutions

WB 1:500 -
1:2000

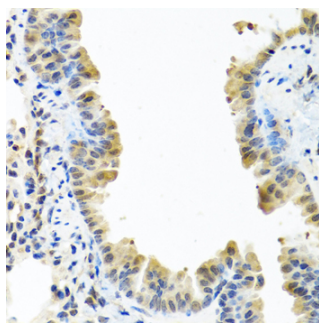
IHC 1:50 -
1:100



Western blot - ARSF Polyclonal Antibody (A8102)



Immunohistochemistry - ARSF Polyclonal Antibody (A8102)



Immunohistochemistry - ARSF Polyclonal Antibody (A8102)