

SPP1 Polyclonal Antibody

Catalog No.	A14062	Category	Polyclonal Antibodies
Applications	WB	Observed MW	45-47kDa
Cross-reactivity	Human, Mouse, Rat	Calculated MW	32kDa/33kDa/35kDa

Immunogen Information

Immunogen	Recombinant fusion protein containing a sequence corresponding to amino acids 106-205 of human SPP1 (NP_001035147.1).
Gene ID	6696
Swiss prot	P10451
Synonyms	SPP1; BNSP; BSPI; ETA-1; OPN; osteopontin

Product information

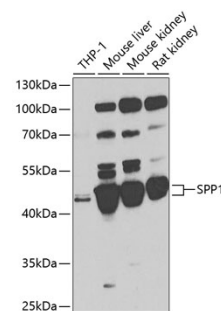
Source	Rabbit
Isotype	IgG
Purification method	Affinity purification
Storage	Store at -20°C. Avoid freeze / thaw cycles. Buffer: PBS with 0.02% sodium azide, 50% glycerol, pH7.3.

Background

The protein encoded by this gene is involved in the attachment of osteoclasts to the mineralized bone matrix. The encoded protein is secreted and binds hydroxyapatite with high affinity. The osteoclast vitronectin receptor is found in the cell membrane and may be involved in the binding to this protein. This protein is also a cytokine that upregulates expression of interferon-gamma and interleukin-12. Several transcript variants encoding different isoforms have been found for this gene.

Recommended Dilutions

WB 1:500 -
1:2000



Western blot - SPP1 Polyclonal Antibody (A14062)