

Phospho-RB1-S807 mAb

Catalog No.	AP0642	Category	Phosphorylated Antibodies
Applications	WB, IHC, IF	Observed MW	149kDa
Cross-reactivity	Human, Mouse, Rat	Calculated MW	106kDa

Immunogen Information

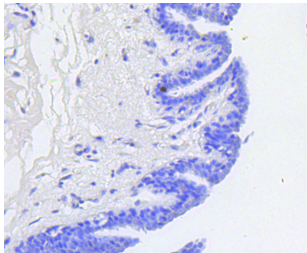
Immunogen	A phospho specific peptide corresponding to residues surrounding S807 of human RB1
Gene ID	5925
Swiss prot	P06400
Synonyms	RB1; OSRC; PPP1R130; RB; p105-Rb; pRb; pp110; RB transcriptional corepressor 1

Product information

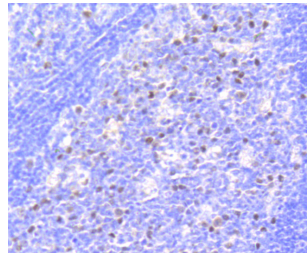
Source	Rabbit
Isotype	IgG
Purification method	Affinity purification
Storage	Store at -20°C. Avoid freeze / thaw cycles. Buffer: PBS with 0.02% sodium azide, 50% glycerol, pH7.3.

Background

The protein encoded by this gene is a negative regulator of the cell cycle and was the first tumor suppressor gene found. The encoded protein also stabilizes constitutive heterochromatin to maintain the overall chromatin structure. The active, hypophosphorylated form of the protein binds transcription factor E2F1. Defects in this gene are a cause of childhood cancer retinoblastoma (RB), bladder cancer, and osteogenic sarcoma.



Immunohistochemistry - Phospho-RB1-S807 mAb (AP0642)



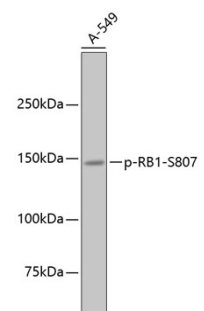
Immunohistochemistry - Phospho-RB1-S807 mAb (AP0642)

Recommended Dilutions

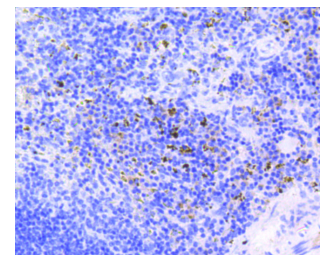
WB 1:500 -
1:2000

IHC 1:50 -
1:200

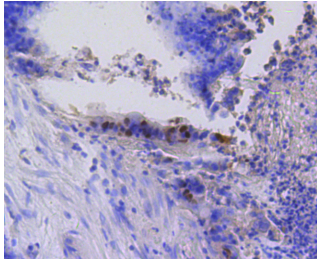
IF 1:50 -
1:200



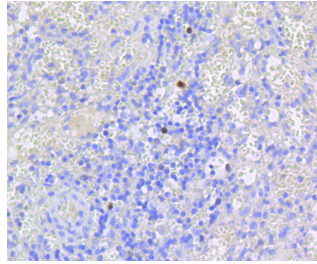
Western blot - Phospho-RB1-S807 mAb (AP0642)



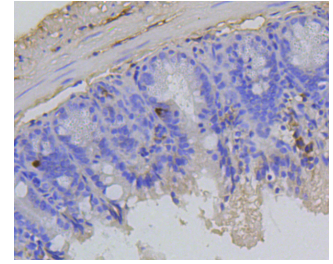
Immunohistochemistry - Phospho-RB1-S807 mAb (AP0642)



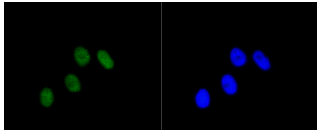
Immunohistochemistry - Phospho-RB1-S807 mAb (AP0642)



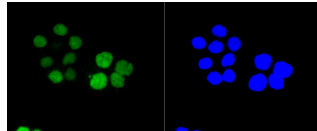
Immunohistochemistry - Phospho-RB1-S807 mAb (AP0642)



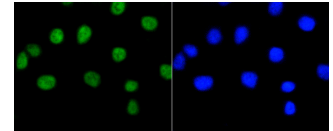
Immunohistochemistry - Phospho-RB1-S807 mAb (AP0642)



Immunofluorescence - Phospho-RB1-S807 mAb (AP0642)



Immunofluorescence - Phospho-RB1-S807 mAb (AP0642)



Immunofluorescence - Phospho-RB1-S807 mAb (AP0642)