

CMTM3 Polyclonal Antibody

Catalog No.	A2943	Category	Polyclonal Antibodies
Applications	WB, IHC	Observed MW	20kDa
Cross-reactivity	Human, Mouse, Rat	Calculated MW	6kDa/19kDa

Immunogen Information

Immunogen	A synthetic peptide of human CMTM3
Gene ID	123920
Swiss prot	Q96MX0
Synonyms	CMTM3; BNAS2; CKLFSF3; CKLF like MARVEL transmembrane domain containing 3

Product information

Source	Rabbit
Isotype	IgG
Purification method	Affinity purification
Storage	Store at -20°C. Avoid freeze / thaw cycles. Buffer: PBS with 0.02% sodium azide, 50% glycerol, pH7.3.

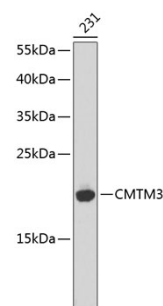
Background

This gene belongs to the chemokine-like factor gene superfamily, a novel family that is similar to the chemokine and the transmembrane 4 superfamilies of signaling molecules. This gene is one of several chemokine-like factor genes located in a cluster on chromosome 16. Alternatively spliced transcript variants containing different 5' UTRs, but encoding the same protein, have been identified.

Recommended Dilutions

WB 1:500 -
1:1000

IHC 1:50 -
1:100



Western blot - CMTM3 Polyclonal Antibody (A2943)