

## SMARCD2 Polyclonal Antibody

<b>Catalog No.</b>	A12104	<b>Category</b>	Polyclonal Antibodies
<b>Applications</b>	WB	<b>Observed MW</b>	64kDa
<b>Cross-reactivity</b>	Human, Mouse	<b>Calculated MW</b>	55kDa/57kDa/58kDa

### Immunogen Information

<b>Immunogen</b>	Recombinant fusion protein containing a sequence corresponding to amino acids 454-531 of human SMARCD2 (NP_001091896.1).
<b>Gene ID</b>	6603
<b>Swiss prot</b>	Q92925
<b>Synonyms</b>	SMARCD2; BAF60B; CRACD2; PRO2451; Rsc6p; SGD2; SWI/SNF-related matrix-associated actin-dependent regulator of chromatin subfamily D member 2

### Product information

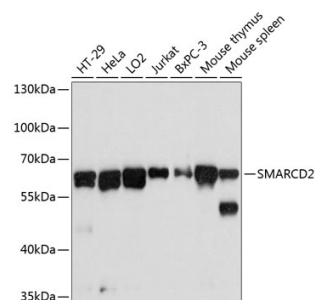
<b>Source</b>	Rabbit
<b>Isotype</b>	IgG
<b>Purification method</b>	Affinity purification
<b>Storage</b>	Store at -20°C. Avoid freeze / thaw cycles. Buffer: PBS with 0.02% sodium azide, 50% glycerol, pH7.3.

### Background

The protein encoded by this gene is a member of the SWI/SNF family of proteins, whose members display helicase and ATPase activities and which are thought to regulate transcription of certain genes by altering the chromatin structure around those genes. The encoded protein is part of the large ATP-dependent chromatin remodeling complex SNF/SWI and has sequence similarity to the yeast Swp73 protein. Alternatively spliced transcript variants encoding different isoforms have been found for this gene.

### Recommended Dilutions

WB 1:500 -  
1:2000



Western blot - SMARCD2 Polyclonal Antibody (A12104)