

ASAH1 Polyclonal Antibody

Catalog No.	A13948	Category	Polyclonal Antibodies
Applications	WB	Observed MW	46kDa
Cross-reactivity	Human, Mouse, Rat	Calculated MW	44kDa/46kDa

Immunogen Information

Immunogen	Recombinant fusion protein containing a sequence corresponding to amino acids 140-389 of human ASAH1 (NP_001120977.1).
Gene ID	427
Swiss prot	Q13510
Synonyms	ASAH1; AC; ACDase; ASAH; PHP; PHP32; SMAPME; acid ceramidase

Product information

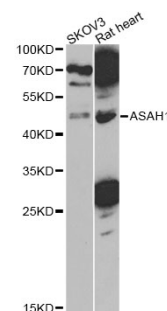
Source	Rabbit
Isotype	IgG
Purification method	Affinity purification
Storage	Store at -20°C. Avoid freeze / thaw cycles. Buffer: PBS with 0.02% sodium azide, 50% glycerol, pH7.3.

Background

This gene encodes a member of the acid ceramidase family of proteins. Alternative splicing results in multiple transcript variants, at least one of which encodes a preproprotein that is proteolytically processed. Processing of this preproprotein generates alpha and beta subunits that heterodimerize to form the mature lysosomal enzyme, which catalyzes the degradation of ceramide into sphingosine and free fatty acid. This enzyme is overexpressed in multiple human cancers and may play a role in cancer progression. Mutations in this gene are associated with the lysosomal storage disorder, Farber lipogranulomatosis, and a neuromuscular disorder, spinal muscular atrophy with progressive myoclonic epilepsy.

Recommended Dilutions

WB 1:500 -
1:2000



Western blot - ASAH1 Polyclonal Antibody (A13948)