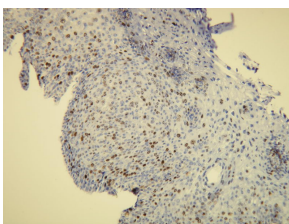


## Anti-Ki-67 Antibody [C16-I] (A8210)

### Specifications:

Name:	Anti-Ki-67 Antibody [C16-I]
Description:	Rabbit monoclonal (C16-I) antibody to Ki-67.
Specificity:	This antibody recognizes the epitope between Lys3243 - Asp3255.
Applications:	IHC-P, IHC-Fr
Recommended Dilutions:	IHC: 1:100-1:200.
Reactivity:	Human
Immunogen:	Peptide derived from C-terminal region of human Ki-67.
Host:	Rabbit
Clonality:	Monoclonal
Clone ID:	C16-I
Isotype:	IgG
Conjugate:	Unconjugated
Product Form:	Liquid
Formulation:	Supplied in Tris Buffered Saline, pH 8.0, with 20 mg/ml BSA and 0.05% Sodium Azide.
Storage:	Store at 4°C.
Disclaimer:	This product is for research use only. It is not intended for diagnostic or therapeutic use.

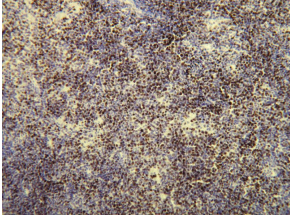
### Images:



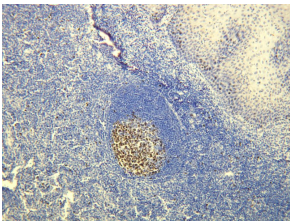
High Grade SIL (squamous intraepithelial lesion) of the uterine cervix showing full-thickness Ki-67 immunoexpression in the dysplastic epithelium. Formalin fixed, paraffin embedded human tissues (4µm sections) stained with Anti-Ki-67 Antibody (A8210).

## Anti-Ki-67 Antibody [C16-I] (A8210)

Images continued:



B-cell lymphoma showing high proliferating index visualised by the Ki-67 immunohistochemistry. Formalin fixed, paraffin embedded human tissues (4µm sections) stained with Anti-Ki-67 Antibody (A8210).



Proliferating germinal centre cells of the lymphoid follicle visualised by the Ki-67 immunohistochemistry. Formalin fixed, paraffin embedded human tissues (4µm sections) stained with Anti-Ki-67 Antibody (A8210).