

CALD1 Monoclonal Antibody

Catalog No.	A10768	Category	Monoclonal Antibodies
Applications	WB, IHC, IF, IP	Observed MW	70kDa
Cross-reactivity	Human, Mouse, Rat	Calculated MW	61kDa/62kDa/64kDa/65kDa/93kDa

Immunogen Information

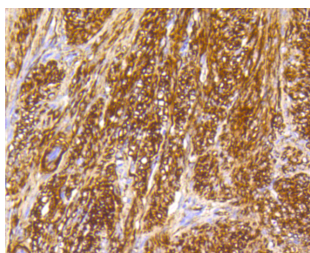
Immunogen	Recombinant protein of human CALD1
Gene ID	800
Swiss prot	Q05682
Synonyms	CALD1; CDM; H-CAD; HCAD; L-CAD; LCAD; NAG22; c aldesmon

Product information

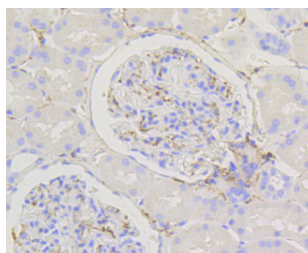
Source	Rabbit
Isotype	IgG
Purification method	Affinity purification
Storage	Store at -20°C. Avoid freeze / thaw cycles. Buffer: PBS with 0.02% sodium azide, 50% glycerol, pH7.3.

Background

This gene encodes a calmodulin- and actin-binding protein that plays an essential role in the regulation of smooth muscle and nonmuscle contraction. The conserved domain of this protein possesses the binding activities to Ca(2+)-calmodulin, actin, tropomyosin, myosin, and phospholipids. This protein is a potent inhibitor of the actin-tropomyosin activated myosin MgATPase, and serves as a mediating factor for Ca(2+)-dependent inhibition of smooth muscle contraction. Alternative splicing of this gene results in multiple transcript variants encoding distinct isoforms.



Immunohistochemistry - CALD1 Monoclonal Antibody (A10768)



Immunohistochemistry - CALD1 Monoclonal Antibody (A10768)

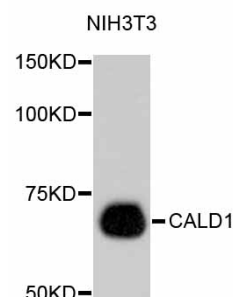
Recommended Dilutions

WB 1:500 -
1:2000

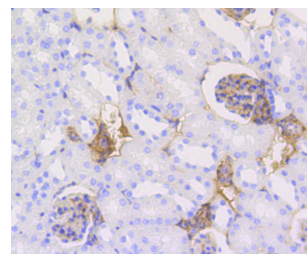
IHC 1:50 -
1:200

IF 1:50 -
1:200

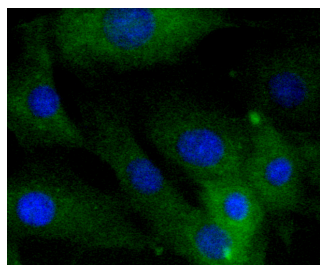
IP 1:20 - 1:50



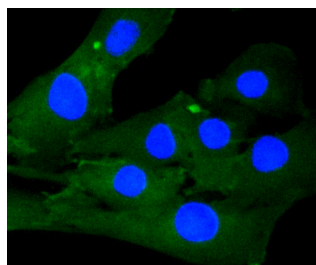
Western blot - CALD1 Monoclonal Antibody (A10768)



Immunohistochemistry - CALD1 Monoclonal Antibody (A10768)



Immunofluorescence - CALD1 Monoclonal Antibody (A10768)



Immunofluorescence - CALD1 Monoclonal Antibody (A10768)