

## CBX6 Polyclonal Antibody

<b>Catalog No.</b>	A5533	<b>Category</b>	Polyclonal Antibodies
<b>Applications</b>	WB, IHC	<b>Observed MW</b>	44kDa
<b>Cross-reactivity</b>	Human, Mouse, Rat	<b>Calculated MW</b>	43kDa

### Immunogen Information

<b>Immunogen</b>	Recombinant fusion protein containing a sequence corresponding to amino acids 80-180 of human CBX6 (NP_055107.3).
<b>Gene ID</b>	23466
<b>Swiss prot</b>	O95503
<b>Synonyms</b>	CBX6; chromobox 6

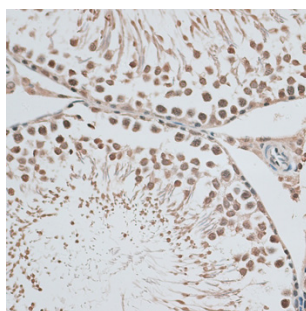
### Product information

<b>Source</b>	Rabbit
<b>Isotype</b>	IgG
<b>Purification method</b>	Affinity purification
<b>Storage</b>	Store at -20°C. Avoid freeze / thaw cycles. Buffer: PBS with 0.02% sodium azide, 50% glycerol, pH7.3.

### Background



Immunohistochemistry - CBX6  
Polyclonal Antibody (A5533)

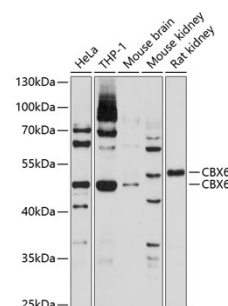


Immunohistochemistry - CBX6  
Polyclonal Antibody (A5533)

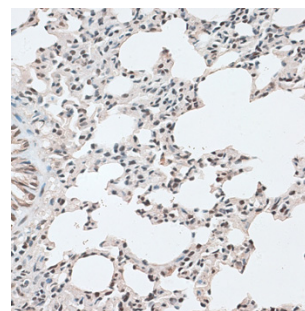
### Recommended Dilutions

WB 1:500 -  
1:2000

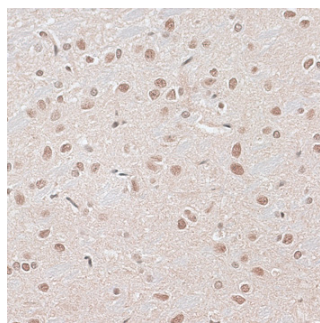
IHC 1:50 -  
1:200



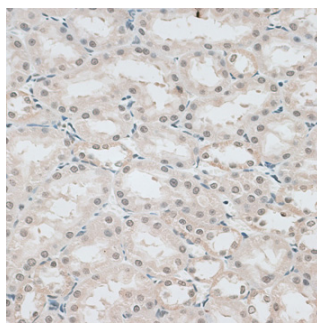
Western blot - CBX6 Polyclonal  
Antibody (A5533)



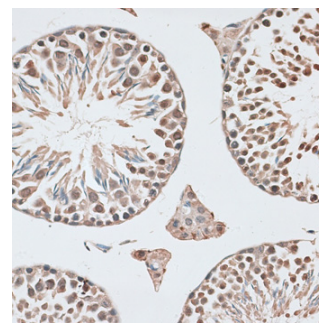
Immunohistochemistry - CBX6  
Polyclonal Antibody (A5533)



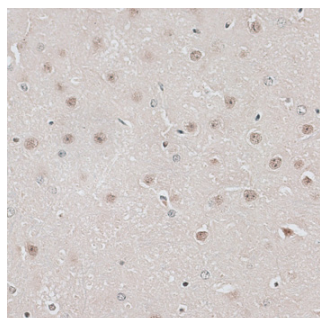
Immunohistochemistry - CBX6 Polyclonal Antibody (A5533)



Immunohistochemistry - CBX6 Polyclonal Antibody (A5533)



Immunohistochemistry - CBX6 Polyclonal Antibody (A5533)



Immunohistochemistry - CBX6 Polyclonal Antibody (A5533)