

## SCARB1 Monoclonal Antibody

<b>Catalog No.</b>	A10799	<b>Category</b>	Monoclonal Antibodies
<b>Applications</b>	WB, IHC	<b>Observed MW</b>	78kDa
<b>Cross-reactivity</b>	Human, Mouse, Rat	<b>Calculated MW</b>	45kDa/53kDa/56kDa/60kDa

### Immunogen Information

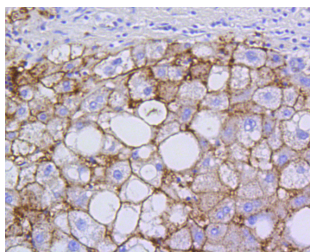
<b>Immunogen</b>	Recombinant protein of human SCARB1
<b>Gene ID</b>	949
<b>Swiss prot</b>	Q8WTV0
<b>Synonyms</b>	SCARB1; CD36L1; CLA-1; CLA1; HDLQTL6; SR-BI; S RB1; scavenger receptor class B member 1

### Product information

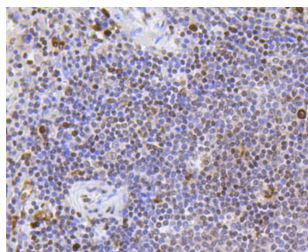
<b>Source</b>	Rabbit
<b>Isotype</b>	IgG
<b>Purification method</b>	Affinity purification
<b>Storage</b>	Store at -20°C. Avoid freeze / thaw cycles. Buffer: PBS with 0.02% sodium azide, 50% glycerol, pH7.3.

### Background

The protein encoded by this gene is a plasma membrane receptor for high density lipoprotein cholesterol (HDL). The encoded protein mediates cholesterol transfer to and from HDL. In addition, this protein is a receptor for hepatitis C virus glycoprotein E2. Two transcript variants encoding different isoforms have been found for this gene.



Immunohistochemistry - SCARB1 Monoclonal Antibody (A10799)

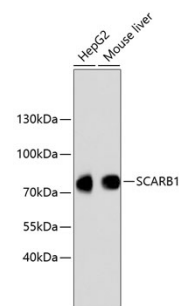


Immunohistochemistry - SCARB1 Monoclonal Antibody (A10799)

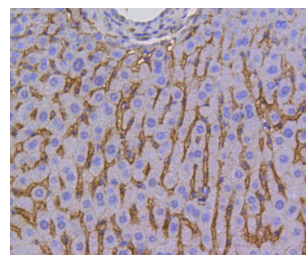
### Recommended Dilutions

WB 1:500 -  
1:2000

IHC 1:50 -  
1:200



Western blot - SCARB1 Monoclonal Antibody (A10799)



Immunohistochemistry - SCARB1 Monoclonal Antibody (A10799)