

## CAPN1 Polyclonal Antibody

<b>Catalog No.</b>	A1172	<b>Category</b>	Polyclonal Antibodies
<b>Applications</b>	WB, IHC	<b>Observed MW</b>	82kDa
<b>Cross-reactivity</b>	Human, Mouse, Rat	<b>Calculated MW</b>	81kDa

### Immunogen Information

<b>Immunogen</b>	Recombinant fusion protein containing a sequence corresponding to amino acids 20-330 of human CAPN1 (NP_005177.2).
<b>Gene ID</b>	823
<b>Swiss prot</b>	P07384
<b>Synonyms</b>	CAPN1; CANP; CANP1; CANPL1; SPG76; muCANP; muCL; calpain 1

### Product information

<b>Source</b>	Rabbit
<b>Isotype</b>	IgG
<b>Purification method</b>	Affinity purification
<b>Storage</b>	Store at -20°C. Avoid freeze / thaw cycles. Buffer: PBS with 0.02% sodium azide, 50% glycerol, pH7.3.

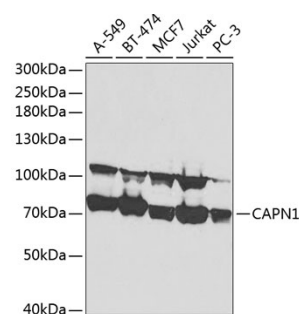
### Background

The calpains, calcium-activated neutral proteases, are nonlysosomal, intracellular cysteine proteases. The mammalian calpains include ubiquitous, stomach-specific, and muscle-specific proteins. The ubiquitous enzymes consist of heterodimers with distinct large, catalytic subunits associated with a common small, regulatory subunit. This gene encodes the large subunit of the ubiquitous enzyme, calpain 1. Several transcript variants encoding two different isoforms have been found for this gene.

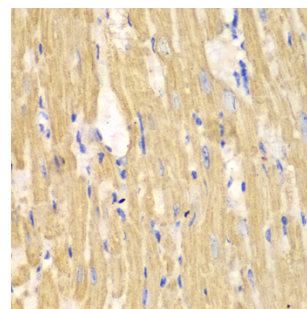
### Recommended Dilutions

WB 1:500 -  
1:2000

IHC 1:50 -  
1:200



Western blot - CAPN1 Polyclonal Antibody (A1172)



Immunohistochemistry - CAPN1 Polyclonal Antibody (A1172)