

CYP2A6 Polyclonal Antibody

Catalog No.	A5815	Category	Polyclonal Antibodies
Applications	WB	Observed MW	50kDa
Cross-reactivity	Human, Mouse	Calculated MW	56kDa

Immunogen Information

Immunogen	Recombinant fusion protein containing a sequence corresponding to amino acids 215-494 of human CYP2A6 (NP_000753.3).
Gene ID	1548
Swiss prot	P11509
Synonyms	CYP2A6; CPA6; CYP2A; CYP2A3; CYP2A6; P450C2A; P450PB; cytochrome P450 2A6

Product information

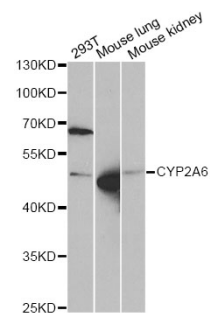
Source	Rabbit
Isotype	IgG
Purification method	Affinity purification
Storage	Store at -20°C. Avoid freeze / thaw cycles. Buffer: PBS with 0.02% sodium azide, 50% glycerol, pH7.3.

Background

This gene, CYP2A6, encodes a member of the cytochrome P450 superfamily of enzymes. The cytochrome P450 proteins are monooxygenases which catalyze many reactions involved in drug metabolism and synthesis of cholesterol, steroids and other lipids. This protein localizes to the endoplasmic reticulum and its expression is induced by phenobarbital. The enzyme is known to hydroxylate coumarin, and also metabolizes nicotine, aflatoxin B1, nitrosamines, and some pharmaceuticals. Individuals with certain allelic variants are said to have a poor metabolizer phenotype, meaning they do not efficiently metabolize coumarin or nicotine. This gene is part of a large cluster of cytochrome P450 genes from the CYP2A, CYP2B and CYP2F subfamilies on chromosome 19q. The gene was formerly referred to as CYP2A3; however, it has been renamed CYP2A6.

Recommended Dilutions

WB 1:500 -
1:2000



Western blot - CYP2A6 Polyclonal Antibody (A5815)